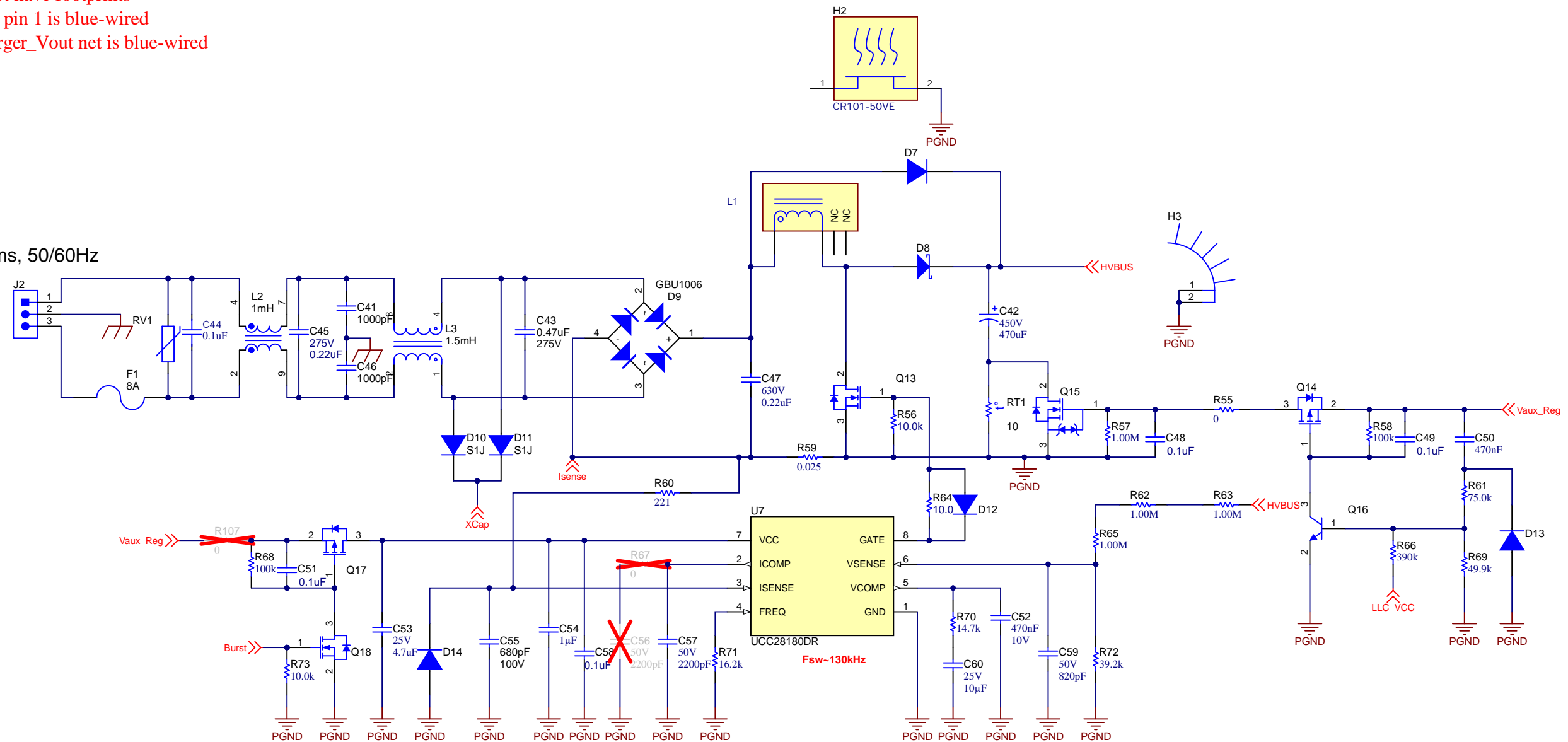


Assembly Notes

1. Designators >200 do not have footprints
2. D20 connection to U12 pin 1 is blue-wired
3. D17 connection to Charger_Vout net is blue-wired

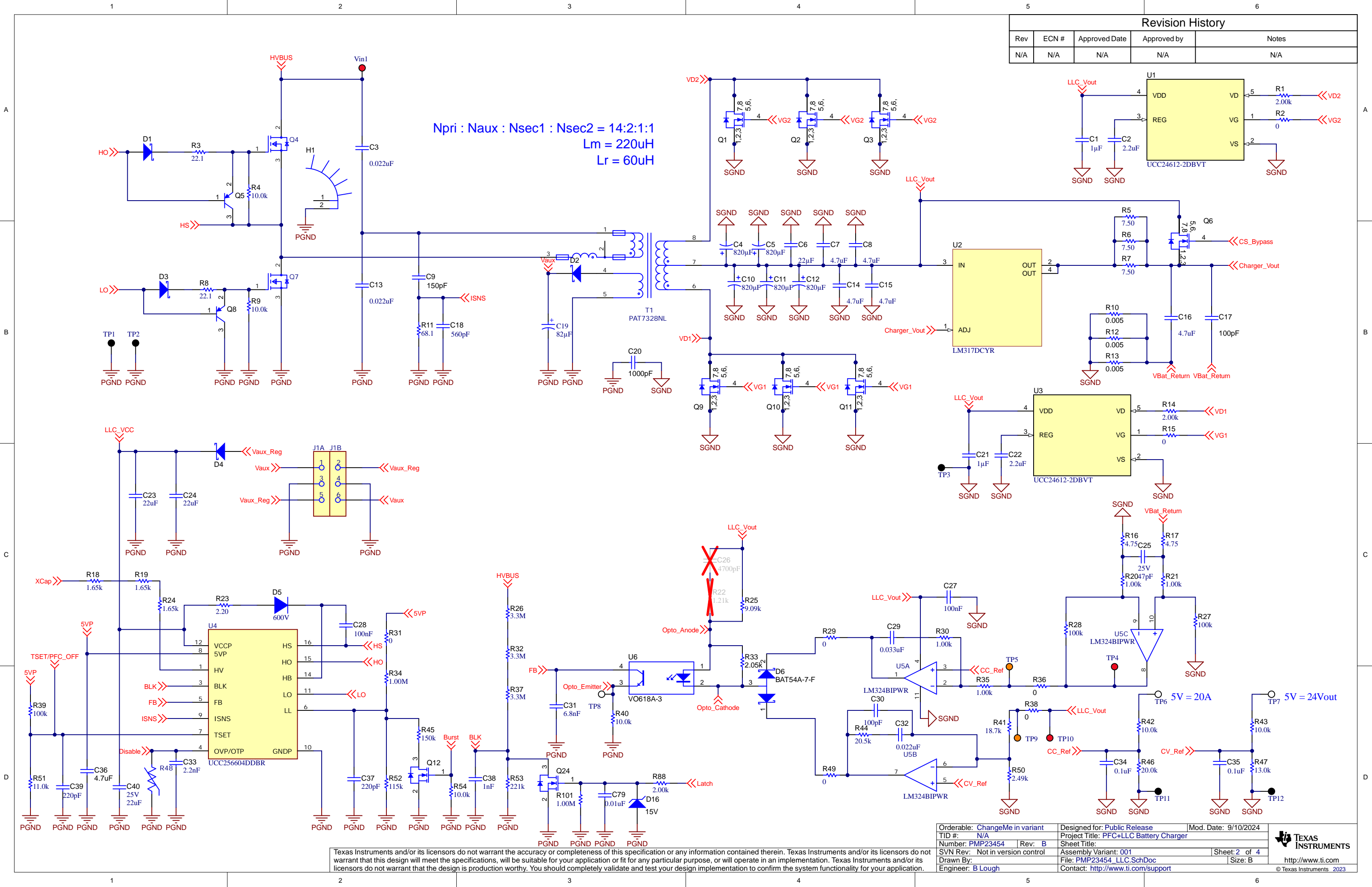
Vac = 85Vrms - 265Vrms, 50/60Hz



Orderable: ChangeMe in variant	Designed for: Public Release	Mod. Date: 9/10/2024
TID #: N/A	Project Title: PFC+LLC Battery Charger	
Number: PMP23454	Rev: B	Sheet Title:
SVN Rev: Not in version control	Assembly Variant: 001	Sheet: 1 of 4
Drawn By:	File: PMP23454_PFC.SchDoc	Size: B
Engineer: B Lough	Contact: http://www.ti.com/support	



Texas Instruments and/or its licensors do not warrant the accuracy or completeness of this specification or any information contained therein. Texas Instruments and/or its licensors do not warrant that this design will meet the specifications, will be suitable for your application or fit for any particular purpose, or will operate in an implementation. Texas Instruments and/or its licensors do not warrant that the design is production worthy. You should completely validate and test your design implementation to confirm the system functionality for your application.

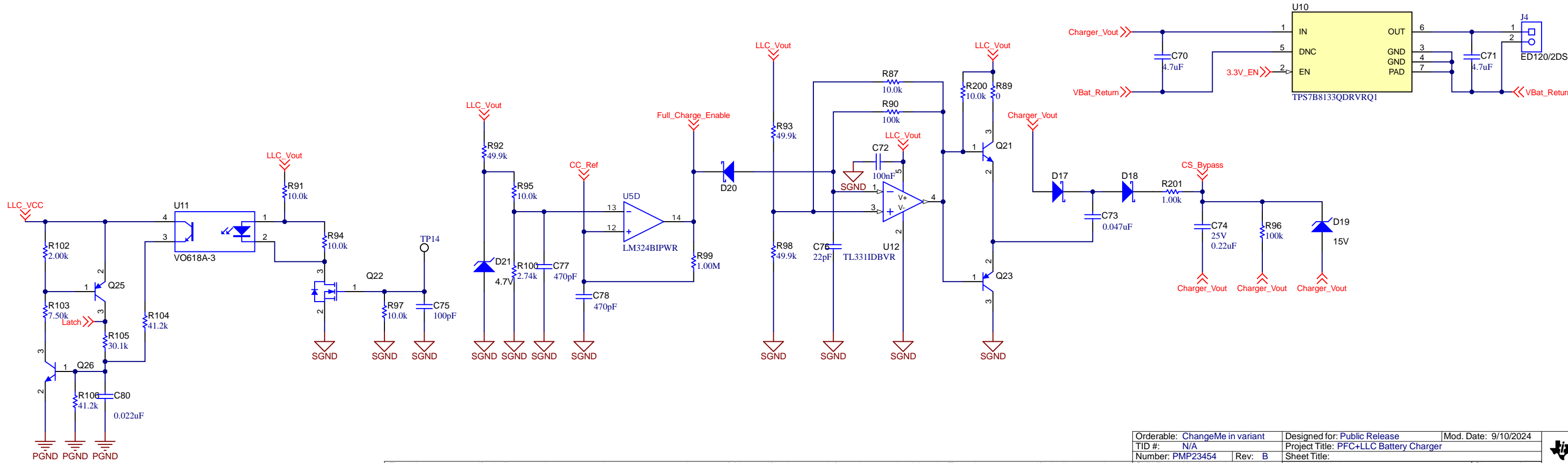
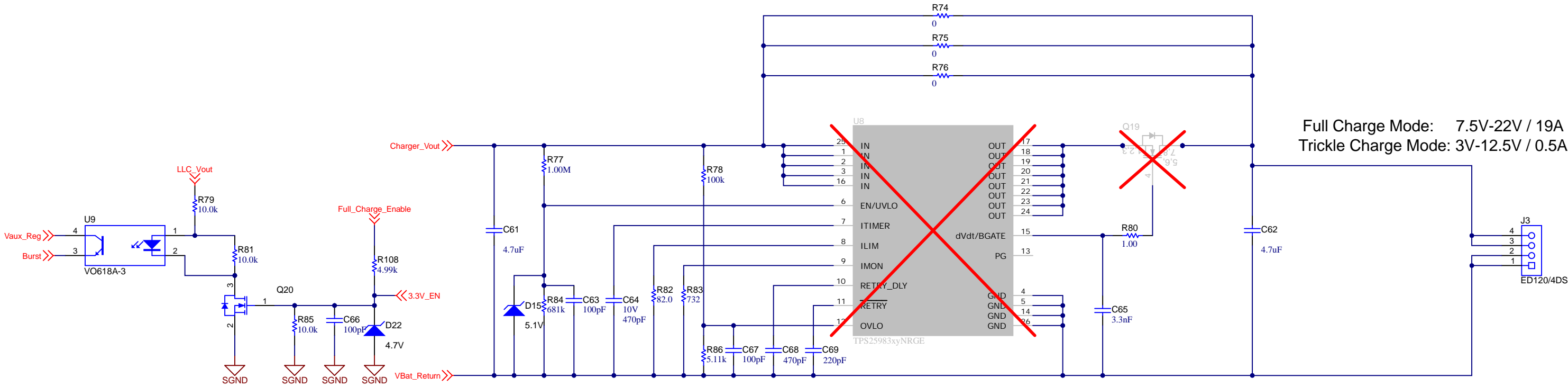


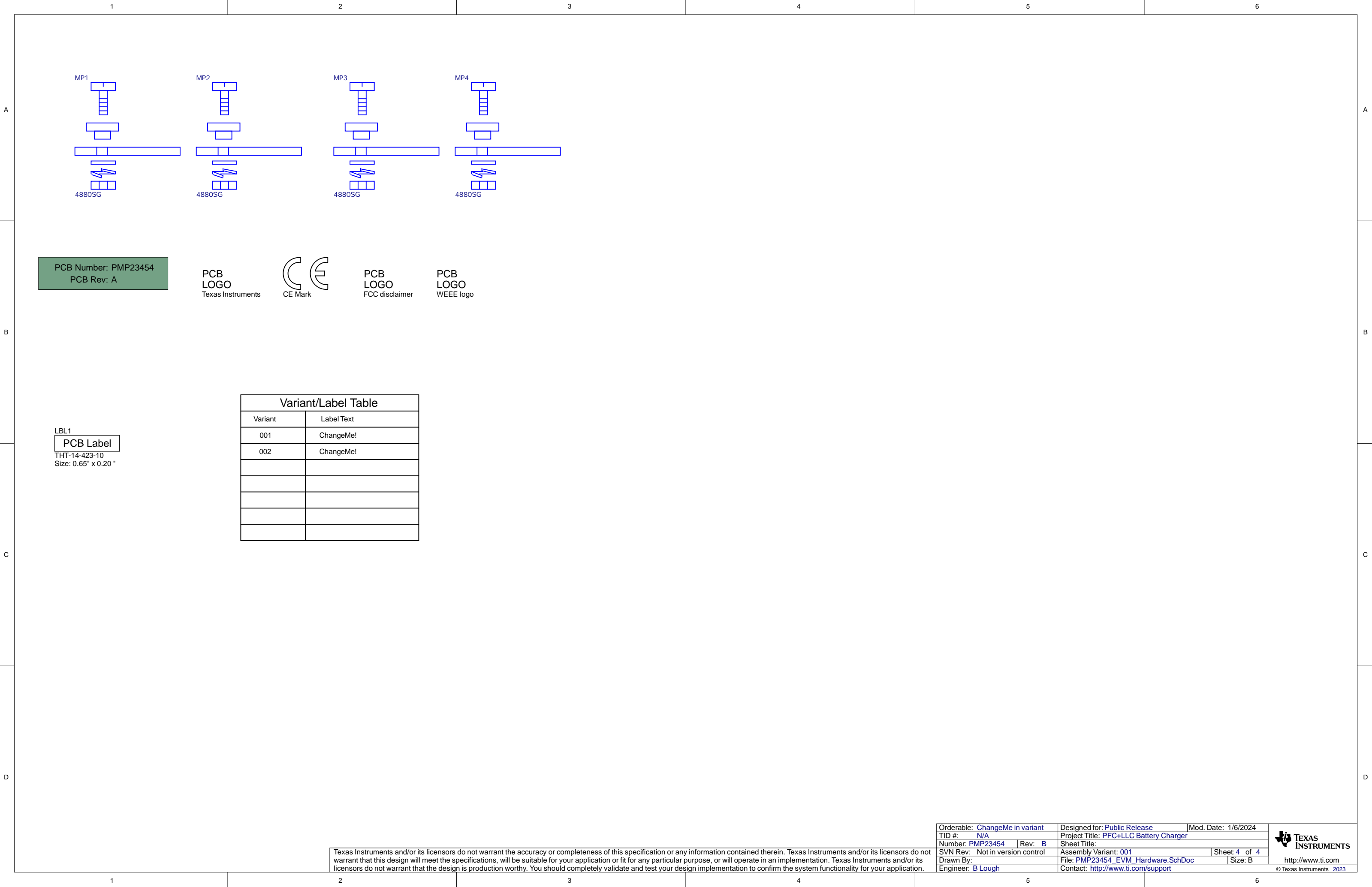
Revision History				
Rev	ECN #	Approved Date	Approved by	Notes
N/A	N/A	N/A	N/A	N/A

Texas Instruments and/or its licensors do not warrant the accuracy or completeness of this specification or any information contained therein. Texas Instruments and/or its licensors do not warrant that this design will meet the specifications, will be suitable for your application or fit for any particular purpose, or will operate in an implementation. Texas Instruments and/or its licensors do not warrant that the design is production worthy. You should completely validate and test your design implementation to confirm the system functionality for your application.

Orderable: ChangeMe in variant	Designed for: Public Release	Mod. Date: 9/10/2024
TID #: N/A	Project Title: PFC+LLC Battery Charger	
Number: PMP23454	Rev: B	Sheet Title:
SVN Rev: Not in version control	Assembly Variant: 001	Sheet: 2 of 4
Drawn By:	File: PMP23454_LLC.SchDoc	Size: B
Engineer: B Lough	Contact: http://www.ti.com/support	

- Notes:
- 1. CC REF <= 1V = trickle charge mode
 - 2. CC REF >1V = full charge mode
 - 3. PFC is disabled in trickle charge mode
 - 4. U8 Imax = 18A. If intended for 19A, bypass U8
 - 5. TP14 latches off supply





Texas Instruments and/or its licensors do not warrant the accuracy or completeness of this specification or any information contained therein. Texas Instruments and/or its licensors do not warrant that this design will meet the specifications, will be suitable for your application or fit for any particular purpose, or will operate in an implementation. Texas Instruments and/or its licensors do not warrant that the design is production worthy. You should completely validate and test your design implementation to confirm the system functionality for your application.

Orderable: ChangeMe in variant		Designed for: Public Release	Mod. Date: 1/6/2024
TID #: N/A		Project Title: PFC+LLC Battery Charger	
Number: PMP23454	Rev: B	Sheet Title:	
SVN Rev: Not in version control		Assembly Variant: 001	Sheet: 4 of 4
Drawn By:		File: PMP23454_EVM_Hardware.SchDoc	Size: B
Engineer: B Lough		Contact: http://www.ti.com/support	