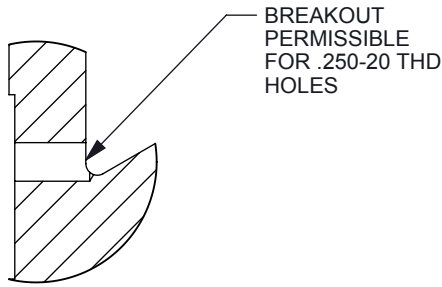
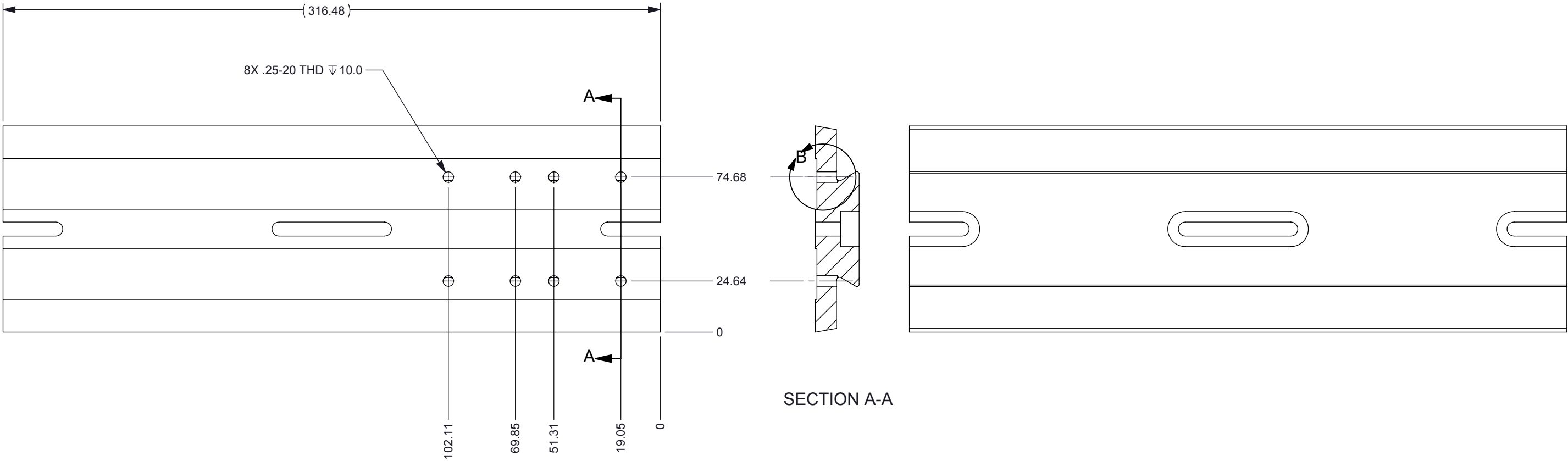


NOTES: UNLESS OTHERWISE SPECIFIED:

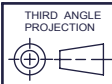
1. MATERIAL AVAILABLE FROM NEWPORT CORPORATION AT http://search.newport.com/?q=*&x2=sku&q2=PRL-12


© COPYRIGHT 2014 TEXAS INSTRUMENTS
UNPUBLISHED, ALL RIGHTS RESERVED

| DWG NO 2514218 | | SHEET 1 | 1 |
|-------------------|----------------------------|------------|----|
| REVISIONS | | | |
| REV | DESCRIPTION | DATE | BY |
| --- | INITIAL RELEASE | 05/07/2014 | SS |
| A | ADDED DETAIL AND TOP VIEWS | 06/11/2014 | SS |



MODIFIED ITEM DRAWING



| | | | | | | | | | | | |
|-------------|---------|---|---------------------|--|------------------|--|---|-------------------|--|--|--------------|
| | | <div>UNLESS OTHERWISE SPECIFIED</div> <ul style="list-style-type: none">DIMENSIONS ARE IN MILLIMETERSTOLERANCES: ANGLES $\pm 1^\circ$ 2 PLACE DECIMALS ± 0.25 1 PLACE DECIMALS ± 0.50DIMENSIONAL LIMITS APPLY BEFORE PROCESSESINTERPRET DIMENSIONS IN ACCORDANCE WITH ASME Y14.5M-1994REMOVE ALL BURRS AND SHARP EDGESPARENTHETICAL INFO FOR REF ONLY | DWN STEVE SMITH | | DATE 5/7/2014 | | <div>TEXAS INSTRUMENTS</div> | | | | |
| | | | Engr STEVE SMITH | | 5/7/2014 | | PRL-12 | | | | |
| | | | CQE/QA | | | | | | | | |
| | | | CM | | | | | | | | |
| | | | | | | | SIZE B | DWG NO 2514218 | | | REV A |
| NEXT ASSY | USED ON | | Apprvd | | | | SCALE 1:2 | | | | SHEET 1 OF 1 |
| APPLICATION | | | | | | | | | | | |



PRL-12