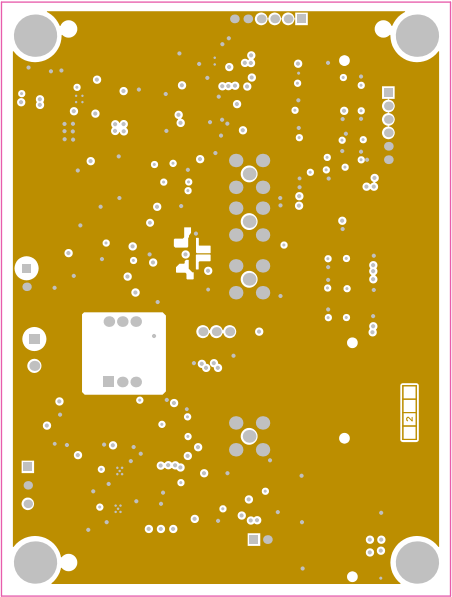
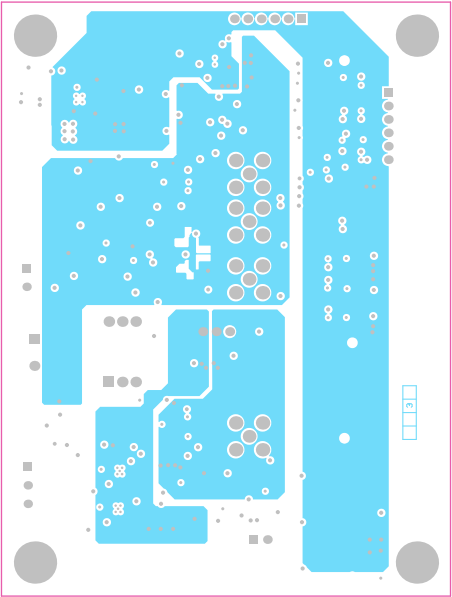


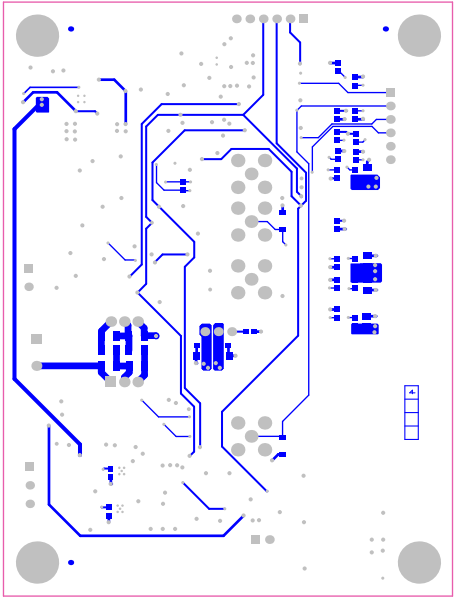
ALL ARTWORK VIEWED FROM TOP SIDE	BOARD #: TIDA-00316	REV: E2	SUN REV: Not In VersionControl
LAYER NAME = Top Layer			
Top Layer	GENERATED : 6/12/2015 5:05:03 PM		TEXAS INSTRUMENTS



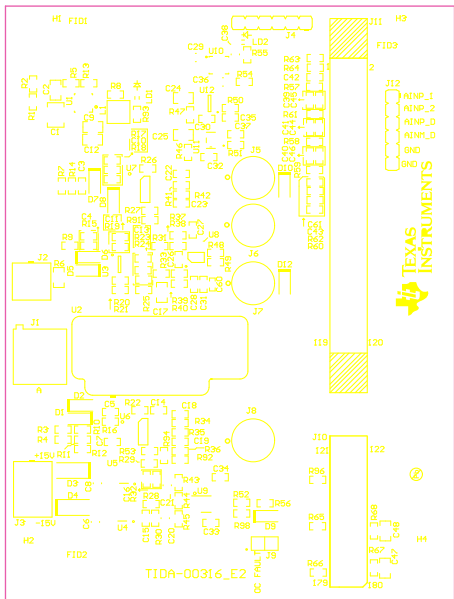
ALL ARTWORK VIEWED FROM TOP SIDE	BOARD #: TIDA-00316	REV: E2	SVN REV: Not In VersionControl
LAYER NAME = LI_GND			
LI_GND	GENERATED : 6/12/2015 5:05:03 PM	TEXAS INSTRUMENTS	



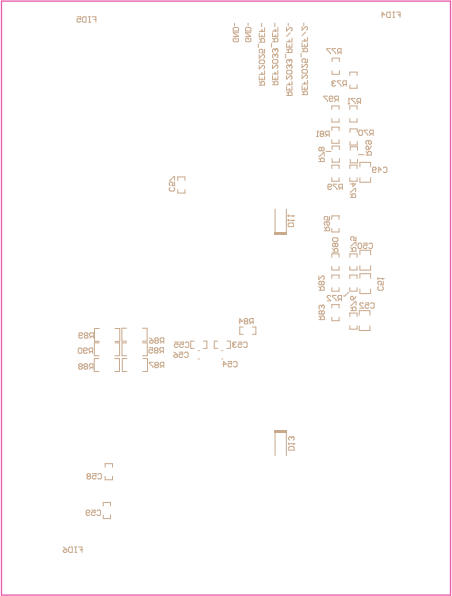
ALL ARTWORK VIEWED FROM TOP SIDE	BOARD #:	TIDA-00316	REV:	E2	SVN REV:	Not In VersionControl
LAYER NAME =	L2_POWER					
L2_POWER	GENERATED	: 6/12/2015	5:05:04 PM	TEXAS INSTRUMENTS		



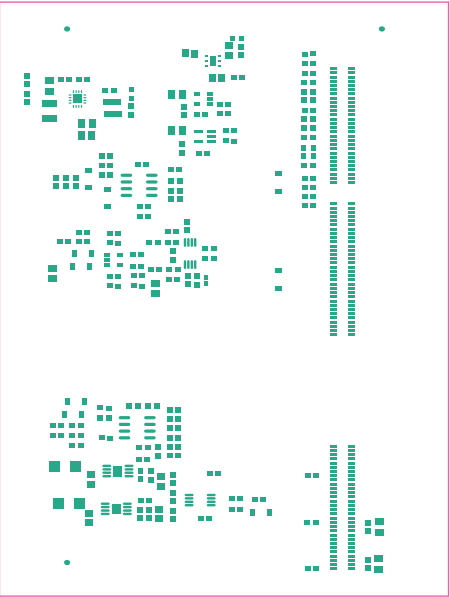
ALL ARTWORK VIEWED FROM TOP SIDE	BOARD #: TIDA-00316	REV: E2	SVN REV: Not In VersionControl
LAYER NAME = Bottom Layer			
Bottom Layer	GENERATED : 6/12/2015 5:05:04 PM	TEXAS INSTRUMENTS	



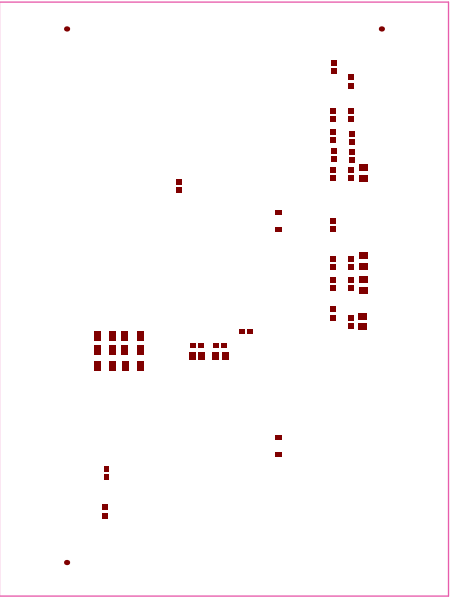
ALL ARTWORK VIEWED FROM TOP SIDE	BOARD #: TIDA-00316	REV: E2	SUN REV: Not In VersionControl
LAYER NAME = Top Overlay			
Top Silkscreen Overlay	GENERATED : 6/12/2015	5:05:05 PM	TEXAS INSTRUMENTS



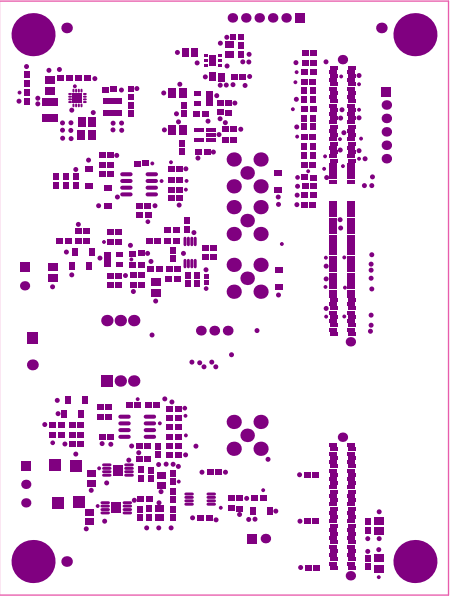
ALL ARTWORK VIEWED FROM TOP SIDE	BOARD #: TIDA-00316	REV: E2	SUN REV: Not In VersionControl
LAYER NAME = Bottom Overlay			
Bottom Silkscreen Overlay	GENERATED : 6/12/2015	5:05:05 PM	TEXAS INSTRUMENTS



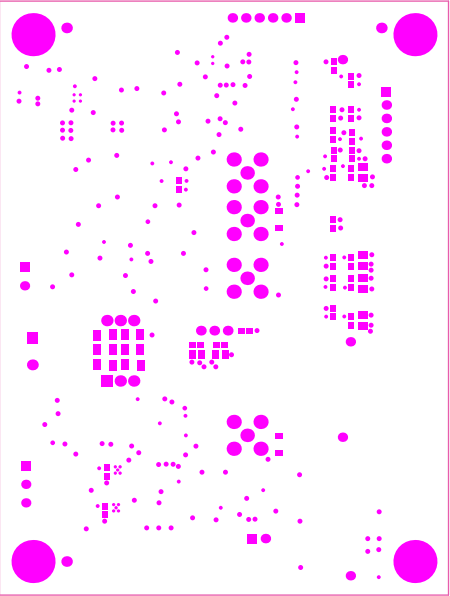
ALL ARTWORK VIEWED FROM TOP SIDE	BOARD #: TIDA-00316	REV: E2	SVN REV: Not In VersionControl
LAYER NAME = Top Paste			
Top Paste Mask Print	GENERATED : 6/12/2015 5:05:06 PM	TEXAS INSTRUMENTS	



ALL ARTWORK VIEWED FROM TOP SIDE	BOARD #: TIDA-00316	REV: E2	SVN REV: Not In VersionControl
LAYER NAME = Bottom Paste			
Bottom Paste Mask Print	GENERATED : 6/12/2015 5:05:06 PM	TEXAS INSTRUMENTS	



ALL ARTWORK VIEWED FROM TOP SIDE	BOARD #: TIDA-00316	REV: E2	SUN REV: Not In VersionControl
LAYER NAME = Top Solder			
Top Solder Mask Print	GENERATED : 6/12/2015 5:05:07 PM	TEXAS INSTRUMENTS	

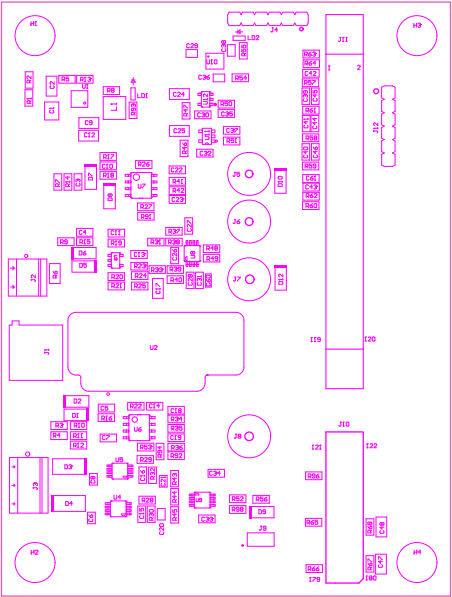


ALL ARTWORK VIEWED FROM TOP SIDE	BOARD #:	TIDA-00316	REV:	E2	SUN REV:	Not In VersionControl
LAYER NAME =	Bottom Solder					
Bottom Solder Mask Print	GENERATED	: 6/12/2015	5:05:07 PM	TEXAS INSTRUMENTS		



ALL ARTWORK VIEWED FROM TOP SIDE	BOARD #: TIDA-00316	REV: E2	SVN REV: Not In VersionControl
LAYER NAME =			
M1 Board Outline	GENERATED : 6/12/2015 5:05:08 PM	TEXAS INSTRUMENTS	

221 ■ These assemblies are ESD sensitive, ESD precautions shall be observed.
222 ■ These assemblies must be clean and free from flux and all contaminants. Use of no clean flux is not acceptable.
223 ■ These assemblies must comply with workmanship standards IPC-A-610 Class 2, unless otherwise specified.



COMPONENTS MARKED "DNP" SHOULD NOT BE POPULATED.
ASSEMBLY COMMENTS: (No Variations)

ALL NOTATION VIEWED FROM TOP SIDE	BOM# 46	TIDH-00366	REV# E3	DATE REV#	Not In VersionControl
LAYER NAME =	PB Assembly Top				
PB Assembly Top	GENERATED	1	6/12/2015	5:05:08 PM	TEKINS INSTRUMENTS

