

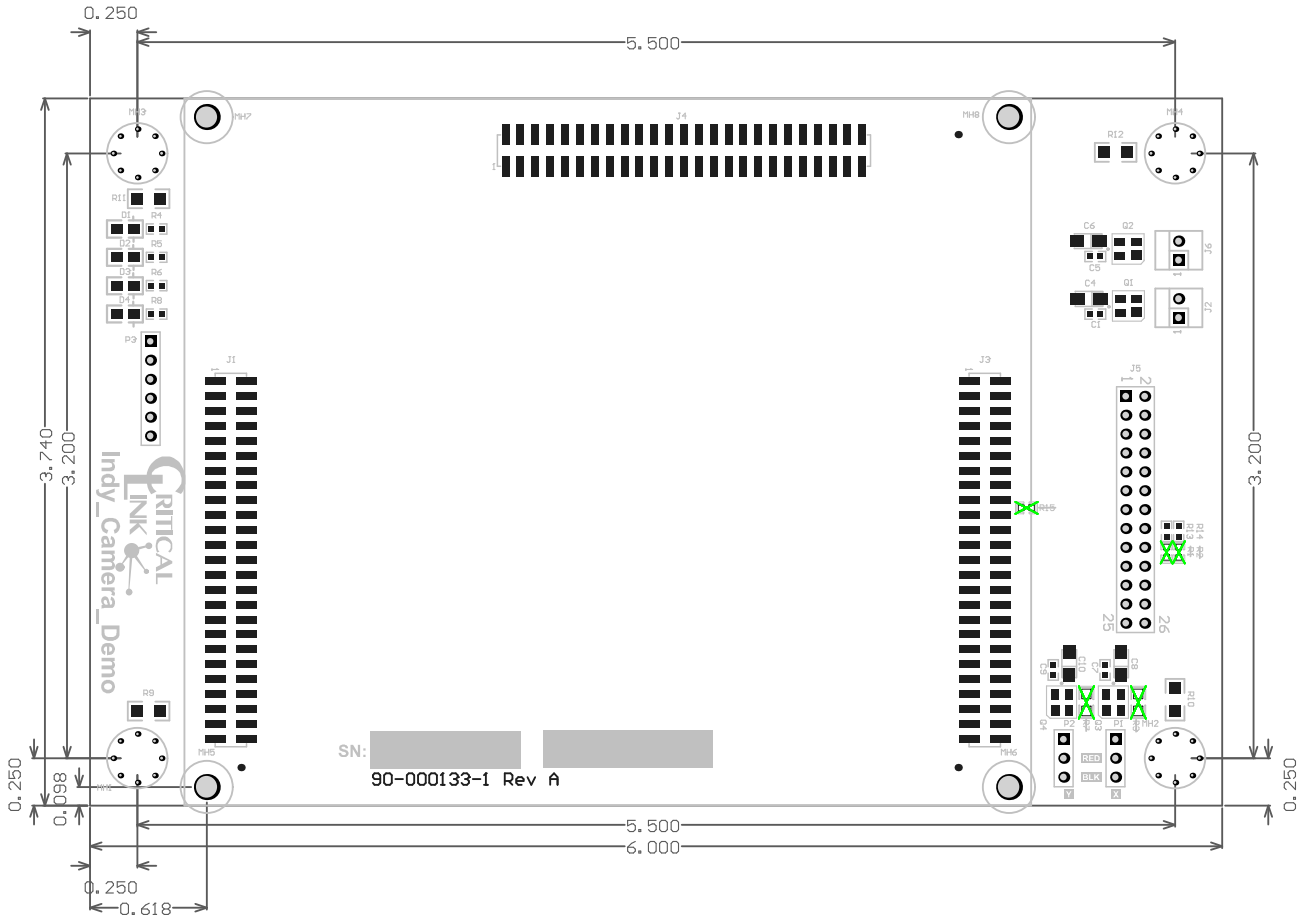
1
PROPRIETARY
THIS DOCUMENT CONTAINS PROPRIETARY INFORMATION. ANY REPRODUCTION, DISCLOSURE, OR USE OF THIS DOCUMENT IS EXPRESSLY PROHIBITED EXCEPT BY WRITTEN AGREEMENT WITH CRITICAL LINK, LLC.

General Notes:

All dimensions are in mils (0.001") unless otherwise specified.


Tolerance on all dimensions shall be ±.005" unless otherwise specified.

REV	DESCRIPTION	INITIALS	DATE
A	Initial release.	O.V	11-30-10



Layer Stack Up Detail for: Indy_Camera_Demo.PcbDoc

Layer Name	Gerber Document	Dielectric Material	Dielectric Type
Top Solder Mask	(.GTS)	Solder Resist	
Top Layer	(.GTL)		
Bottom Layer	(.GBL)	FR4	Core
Bottom Solder Mask	(.GBS)	Solder Resist	

ENGINEER: David Rice	TITLE: Indy Camera Demo			 Critical Link, LLC 6712 Brooklawn Pkwy Syracuse, NY 13211 315.425.4045 www.criticallink.com
PCB DESIGNER: Oscar Valera				
DATE: 4/15/2011	PART NO.: 90-000133-1	REV: A	SIZE: B	
FILE NAME: Indy_Camera_Demo.PcbDoc	PRINT NAME: 80-000322RI-1 RevA Top Assembly Drawing	SCALE: SCALE: 0.98		

