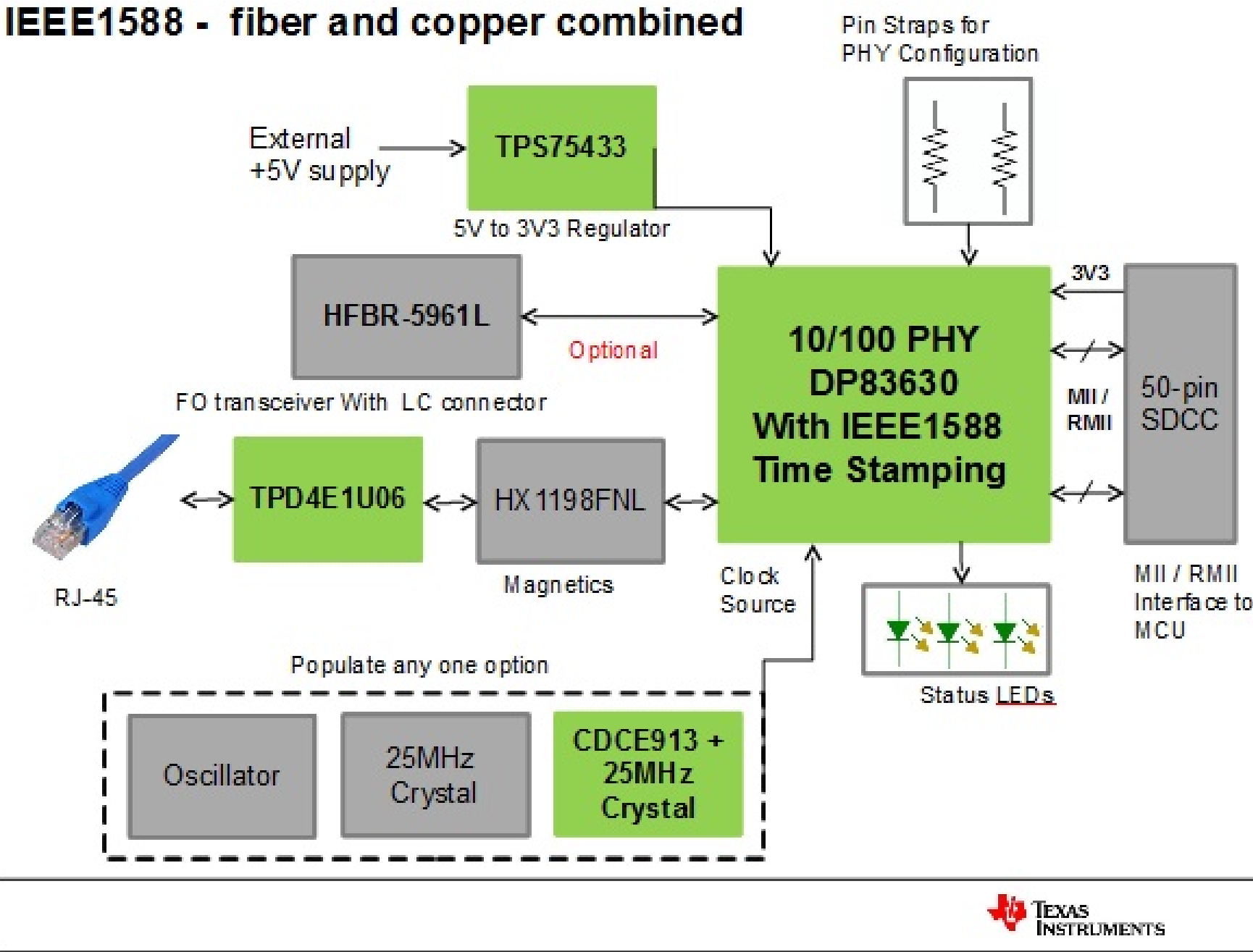


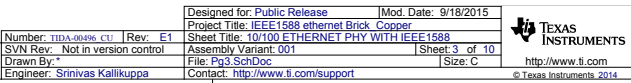
1	2	3	4	5	6
A					
B	Page 2    BLOCK DIAGRAM				
	Page 3    10/100 ETHERNET PHY WITH IEEE1588				
	Page 4    CLOCK GENERATOR				
	Page 5    FIBER OPTIC TRANSCEIVER-LC TYPE				
C	Page 6    RJ45 CONNECTOR WITH TRANSFORMER				
	Page 7    MII / RMII INTERFACE				
	Page 8    PHY CONFIGURATION				
D	Page 9    POWER SUPPLY				
	Page 10    HARDWARES				

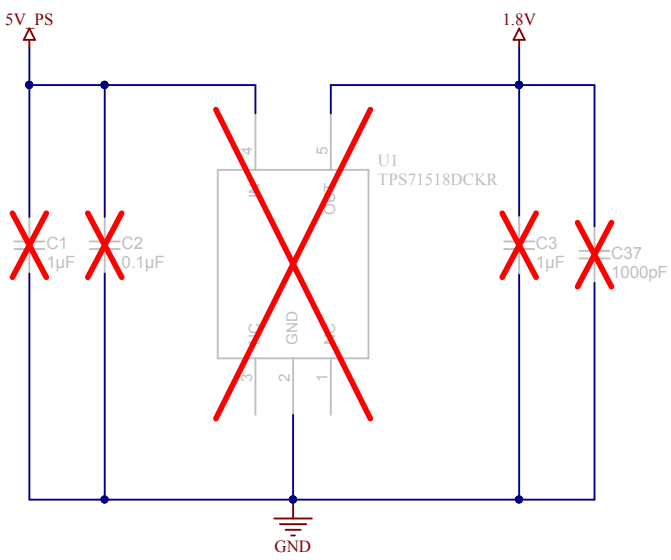
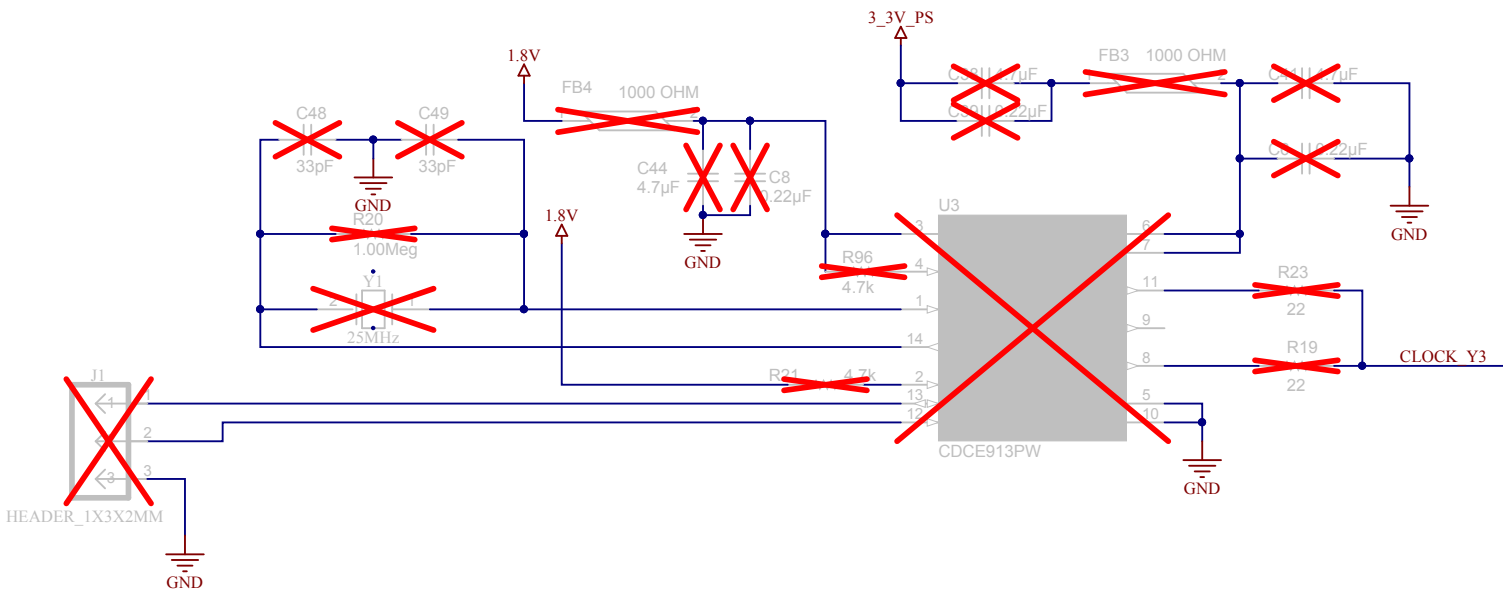
Revision History	
Revision	Notes

Texas Instruments and/or its licensors do not warrant the accuracy or completeness of this specification or any information contained therein. Texas Instruments and/or its licensors do not warrant that this design will meet the specifications, will be suitable for your application or fit for any particular purpose, or will operate in an implementation. Texas Instruments and/or its licensors do not warrant that the design is production worthy. You should completely validate and test your design implementation to confirm the system functionality for your application.

IEEE1588 - fiber and copper combined



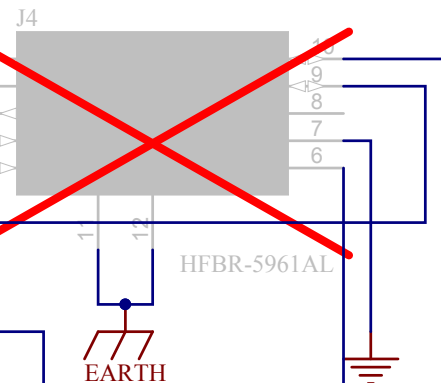




3\_3V\_PS  
CT INPUT1  
R76  
0

CT INPUT1

Place capacitors,  
inductors, and  
resistors close to  
transceiver.



TDP A

R75  
49.9

R71  
49.9

R70  
49.9

R61  
130

R72  
130

C29  
0.1µF

TDM A

R74  
49.9

C28  
0.1µF

RDM B

R60  
0

RDP B

R66  
0

Place jumpers, capacitors and  
resistors close to TLK105.

R67  
82

R68  
82

LED SPEED

R114  
0

R84  
130

R82  
82

R83  
82

R80  
82

C33  
10µF

C31  
0.1µF

C30  
0.1µF

C32  
0.1µF

R77  
49.9

R78  
49.9

HFBR-5961AL

EARTH

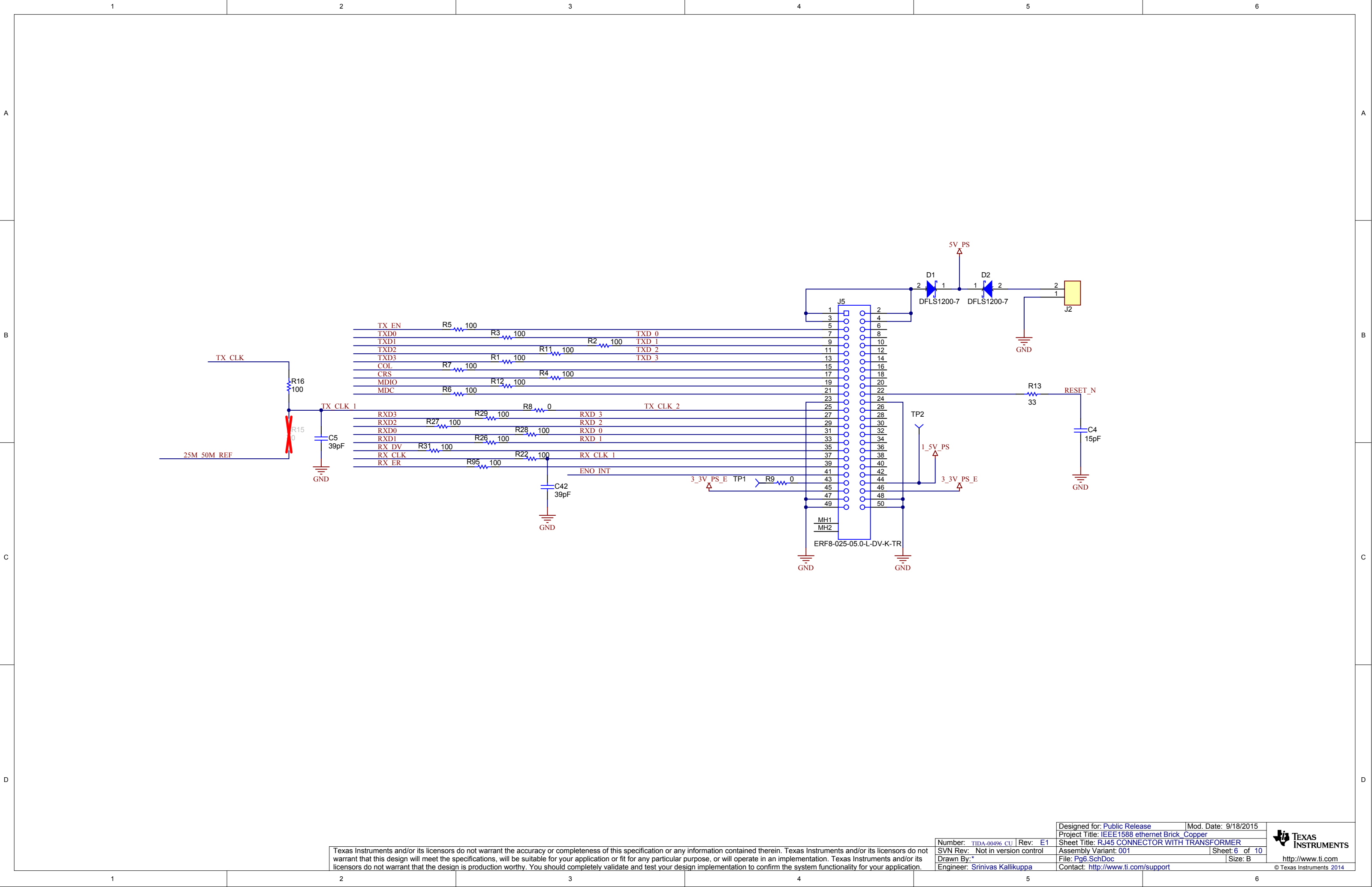
CIG21L1R0MNE  
L1  
CIG21L1R0MNE  
L2

Texas Instruments and/or its licensors do not warrant the accuracy or completeness of this specification or any information contained therein. Texas Instruments and/or its licensors do not warrant that this design will meet the specifications, will be suitable for your application or fit for any particular purpose, or will operate in an implementation. Texas Instruments and/or its licensors do not warrant that the design is production worthy. You should completely validate and test your design implementation to confirm the system functionality for your application.

Number: [TIDA-00496 CU](#) Rev: [E1](#)  
SVN Rev: Not in version control  
Drawn By:  
Engineer: [Srinivas Kallikuppa](#)

Designed for: [Public Release](#) Mod. Date: 9/18/2015  
Project Title: [IEEE1588 ethernet Brick Copper](#)  
Sheet Title: [FIBER OPTIC TRANSCEIVER-LC TYPE](#)  
Assembly Variant: 001 Sheet: 5 of 10  
File: [Pg5.SchDoc](#) Size: A4  
Contact: <http://www.ti.com/support>

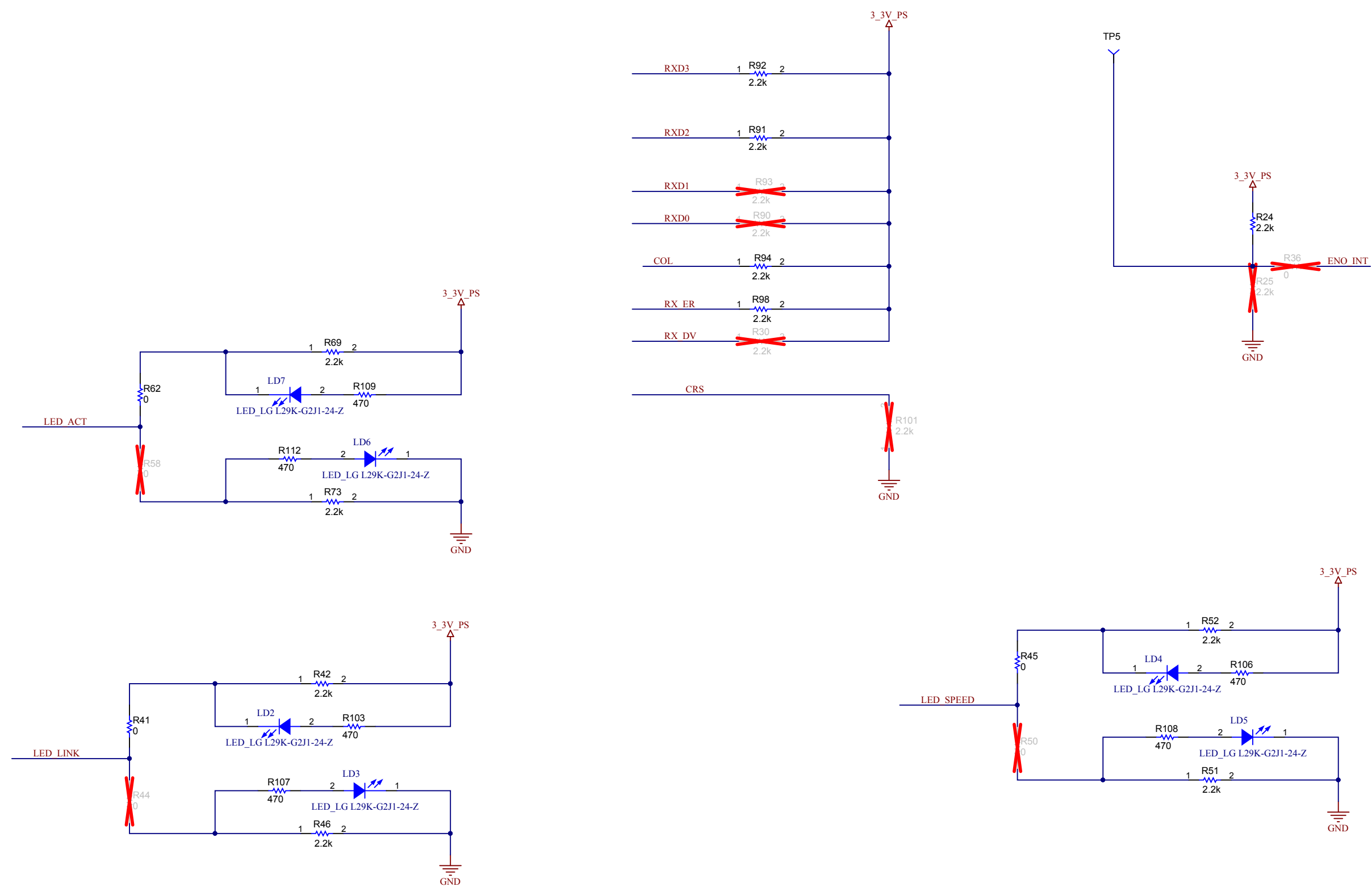
**TEXAS  
INSTRUMENTS**  
<http://www.ti.com>  
© Texas Instruments 2014



Texas Instruments and/or its licensors do not warrant the accuracy or completeness of this specification or any information contained therein. Texas Instruments and/or its licensors do not warrant that this design will meet the specifications, will be suitable for your application or fit for any particular purpose, or will operate in an implementation. Texas Instruments and/or its licensors do not warrant that the design is production worthy. You should completely validate and test your design implementation to confirm the system functionality for your application.

Number: TIDA-00496_CU	Rev: E1	Designed for: Public Release	Mod. Date: 9/18/2015
SVN Rev: Not in version control	Assembly Variant: 001	Project Title: IEEE1588 ethernet Brick Copper	Sheet Title: RJ45 CONNECTOR WITH TRANSFORMER
Drawn By: Srinivas Kallikuppa	File: Pg6.SchDoc	Size: B	Sheet: 6 of 10
Engineer: Srinivas Kallikuppa	Contact: http://www.ti.com/support		

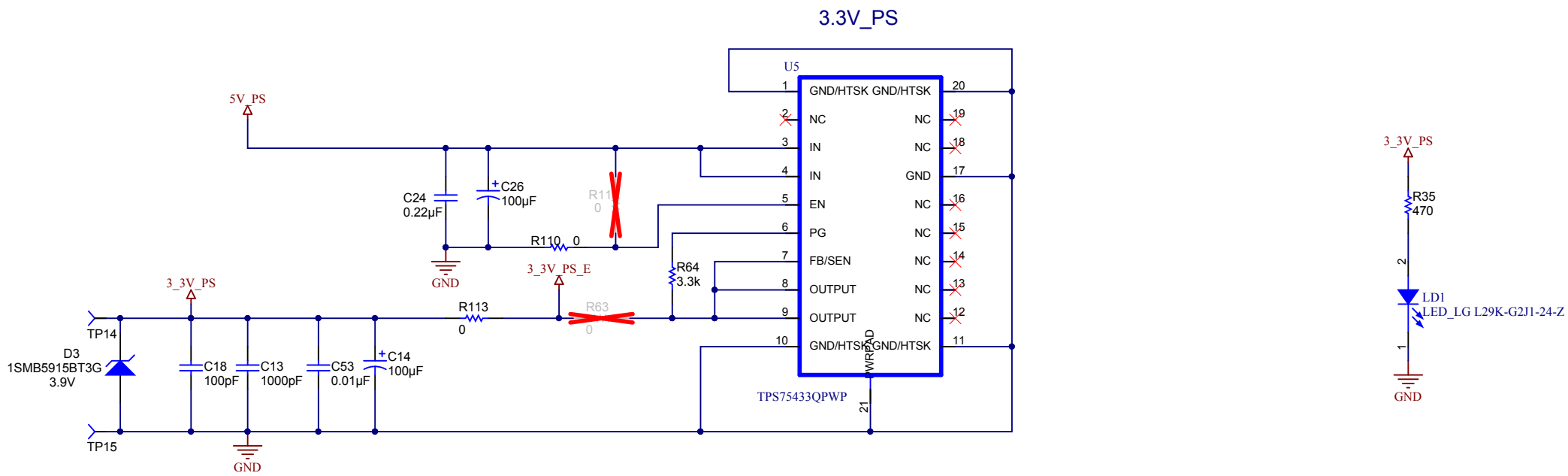
CONFIGURATION PINS



Texas Instruments and/or its licensors do not warrant the accuracy or completeness of this specification or any information contained therein. Texas Instruments and/or its licensors do not warrant that this design will meet the specifications, will be suitable for your application or fit for any particular purpose, or will operate in an implementation. Texas Instruments and/or its licensors do not warrant that the design is production worthy. You should completely validate and test your design implementation to confirm the system functionality for your application.

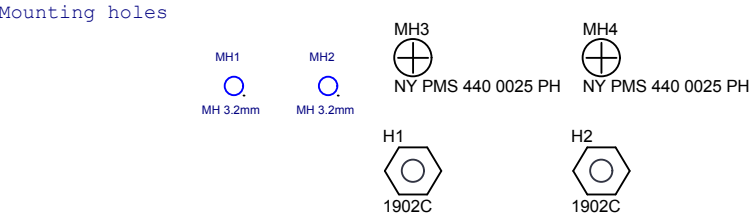






Texas Instruments and/or its licensors do not warrant the accuracy or completeness of this specification or any information contained therein. Texas Instruments and/or its licensors do not warrant that this design will meet the specifications, will be suitable for your application or fit for any particular purpose, or will operate in an implementation. Texas Instruments and/or its licensors do not warrant that the design is production worthy. You should completely validate and test your design implementation to confirm the system functionality for your application.





PCB Number: TIDA-00496\_CU  
PCB Rev: E1

PCB  
LOGO  
Texas Instruments

LBL1

Size: 0.65" x 0.20 "

Label Table	
Variant	Label Text
001	ChangeMe!
002	ChangeMe!

ZZ1  
Label Assembly Note  
This Assembly Note is for PCB labels only

ZZ2  
Assembly Note  
These assemblies are ESD sensitive, ESD precautions shall be observed.

ZZ3  
Assembly Note  
These assemblies must be clean and free from flux and all contaminants. Use of no clean flux is not acceptable.

ZZ4  
Assembly Note  
These assemblies must comply with workmanship standards IPC-A-610 Class 2, unless otherwise specified.