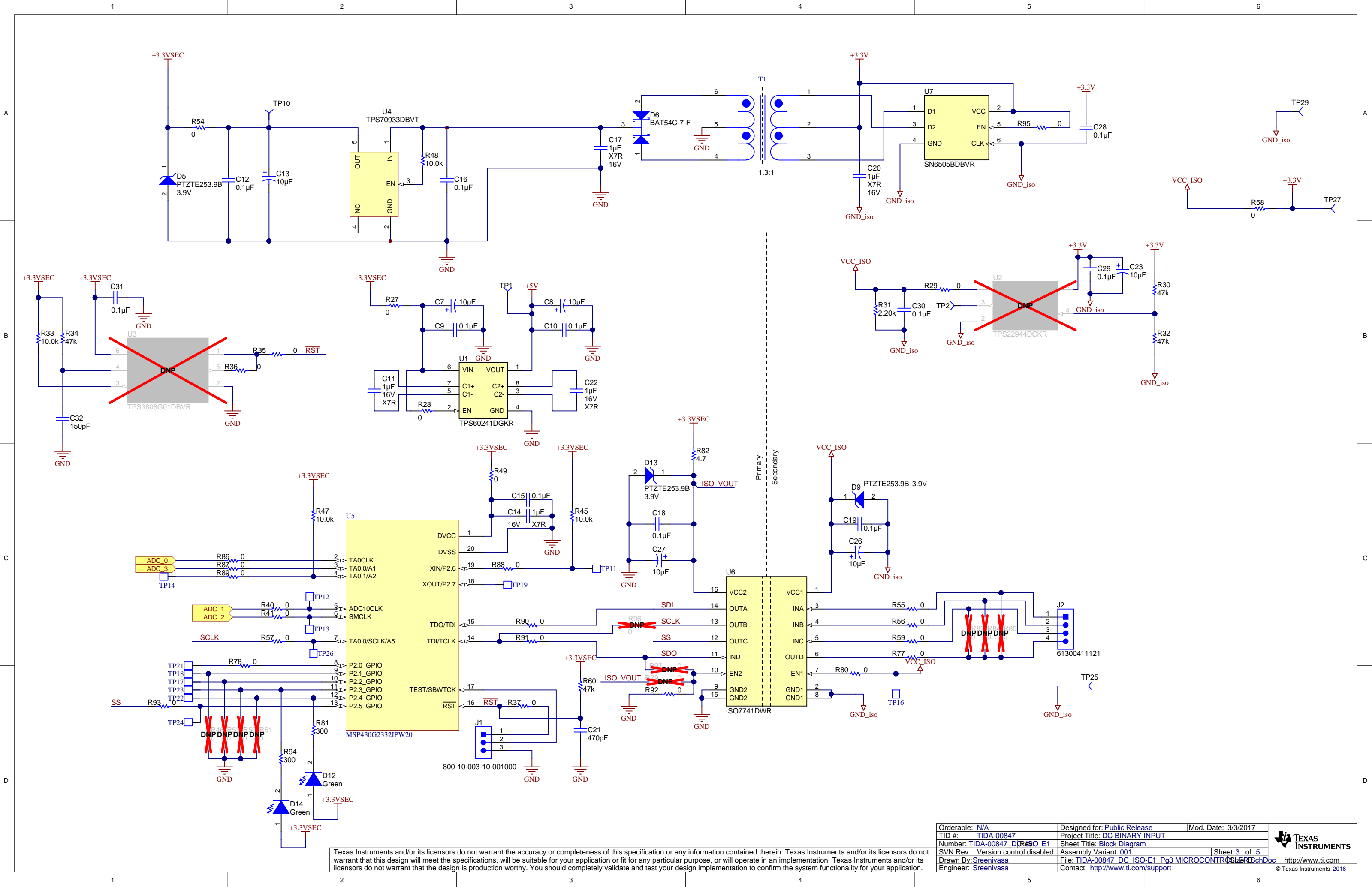


Copyright © 2016, Texas Instruments Incorporated

Texas Instruments and/or its licensors do not warrant the accuracy or completeness of this specification or any information contained therein. Texas Instruments and/or its licensors do not warrant that this design will meet the specifications, will be suitable for your application or fit for any particular purpose, or will operate in an implementation. Texas Instruments and/or its licensors do not warrant that the design is production worthy. You should completely validate and test your design implementation to confirm the system functionality for your application.

Orderable: N/A	Designed for: Public Release	Mod. Date: 3/1/2017
TID #: TIDA-00847	Project Title: DC BINARY INPUT	
Number: TIDA-00847_DCR ISO E1	Sheet Title: Block Diagram	
SVN Rev: Version control disabled	Assembly Variant: 001	Sheet: 2 of 5
Drawn By: Sreenivasa	File: TIDA-00847_DC_ISO-E1_Pg2 Block Diagram.SSD	
Engineer: Sreenivasa	Contact: http://www.ti.com/support	



Variant	Label Text
001	ChangeMe!
002	ChangeMe!

PCB Number: TIDA-00847_DC_ISO	PCB LOGO	PCB LOGO	PCB LOGO
PCB Rev: E1	Pb-Free	Pb-Free Symbol	Texas Instruments

LBL1

PCB Label

Size: 0.65" x 0.20 "

ZZ1
Label Assembly Note
This Assembly Note is for PCB labels only

Assembly Note
These assemblies are ESD sensitive, ESD precautions shall be observed.

ZZ3


Assembly Note

These assemblies must be clean and free from flux and all contaminants. Use of no clean flux is not acceptable.

ZZ4

Assembly Note

These assemblies must comply with workmanship standards IPC-A-610 Class 2, unless otherwise specified.

Orderable: N/A	Designed for: Public Release	Mod. Date: 12/15/2016	 TEXAS INSTRUMENTS http://www.ti.com © Texas Instruments 2016
TID #: TIDA-00847	Project Title: DC BINARY INPUT		
Number: TIDA-00847_DCR00 E1	Sheet Title: Block Diagram		
SVN Rev: Version control disabled	Assembly Variant: 001	Sheet: 5 of 5	
Drawn By: Sreenivasa	File: TIDA-00847_DC_ISO-E1_Pg 5 Hardware.Sch.Dwg	Size: B	
Engineer: Sreenivasa	Contact: http://www.ti.com/support		