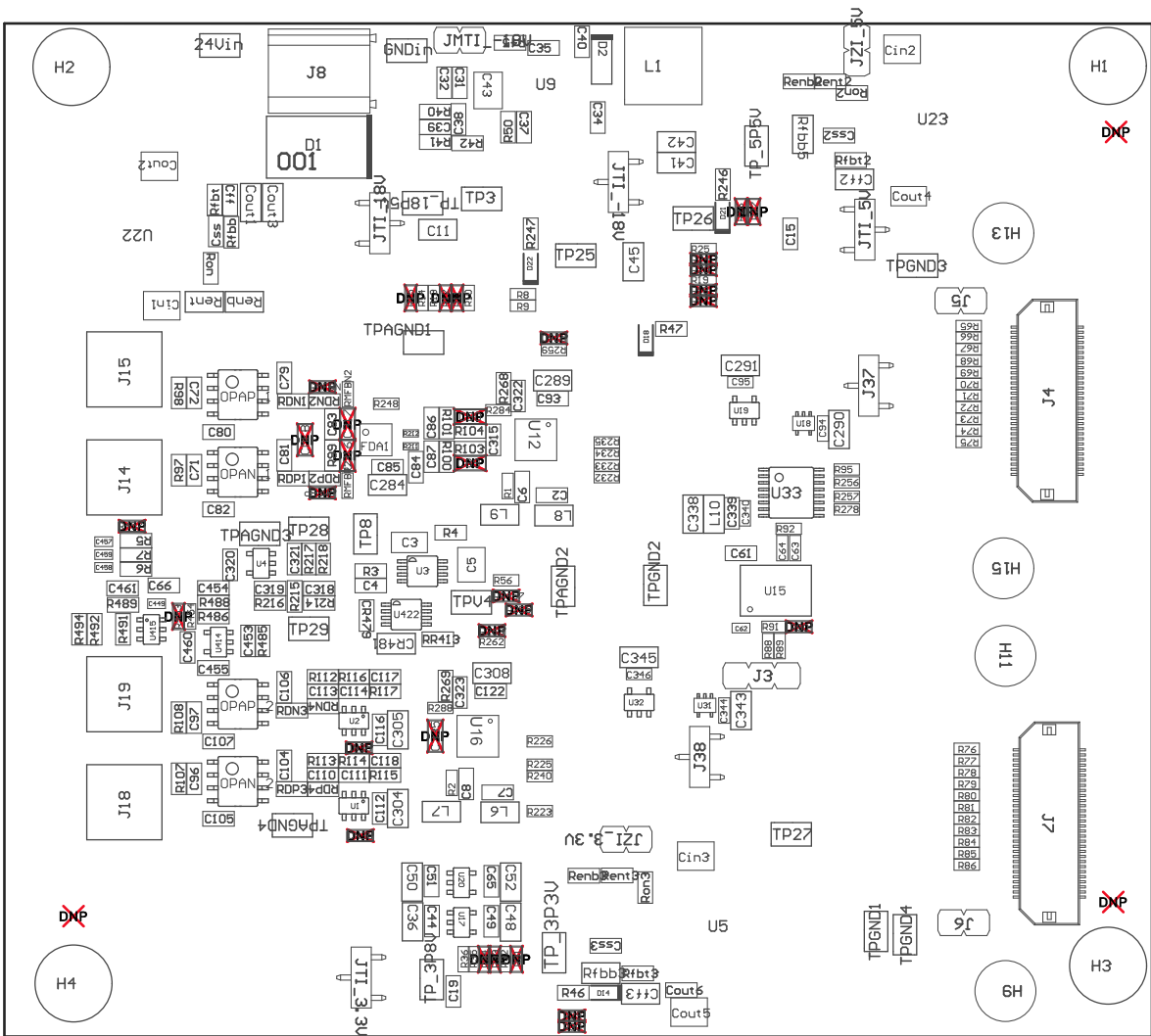
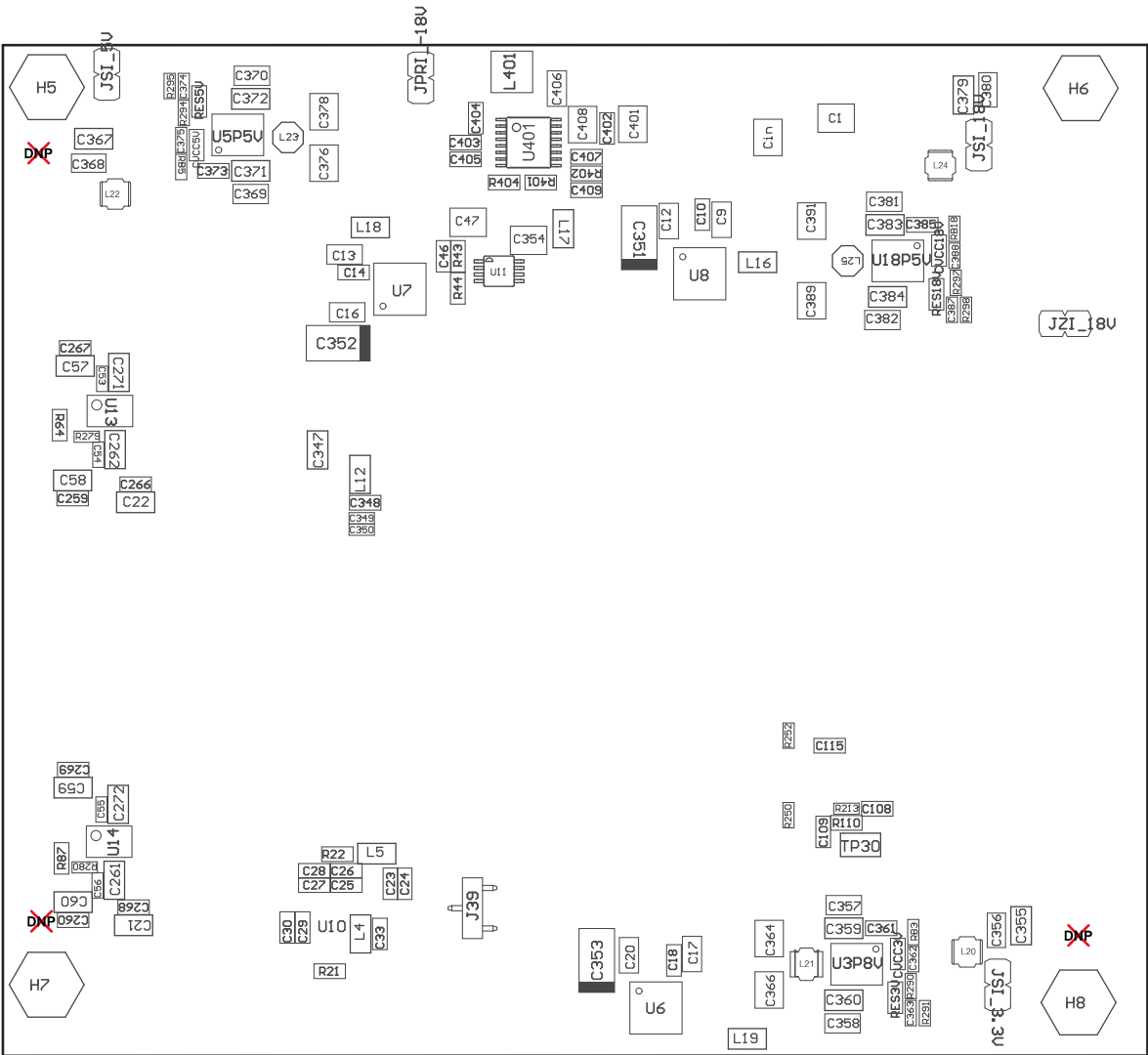


ZZ2 ■ These assemblies are ESD sensitive, ESD precautions shall be observed.
ZZ3 ■ These assemblies must be clean and free from flux and all contaminants. Use of no clean flux is not acceptable.
ZZ4 ■ These assemblies must comply with workmanship standards IPC-A-610 Class 2, unless otherwise specified.



COMPONENTS MARKED 'DNP' SHOULD NOT BE POPULATED.
ASSEMBLY VARIANT:

PCB VIEWED FROM TOP SIDE	BOARD #: TIDA-01055	REV: E1	SUN REV: Not In VersionControl
	TID #: 01055		
PLOT NAME = Top Assembly Drawing	GENERATED : 8/3/2017 6:21:57 PM		TEXAS INSTRUMENTS



COMPONENTS MARKED 'DNP' SHOULD NOT BE POPULATED.
ASSEMBLY VARIANT: 001

PCB VIEWED FROM BOTTOM SIDE	BOARD #: TIDA-01055	REV: E1	SUN REV: Not In VersionControl
	TID #: 01055		
PLOT NAME = Bottom Assembly Drawing	GENERATED : 8/3/2017 6:21:59 PM		TEXAS INSTRUMENTS