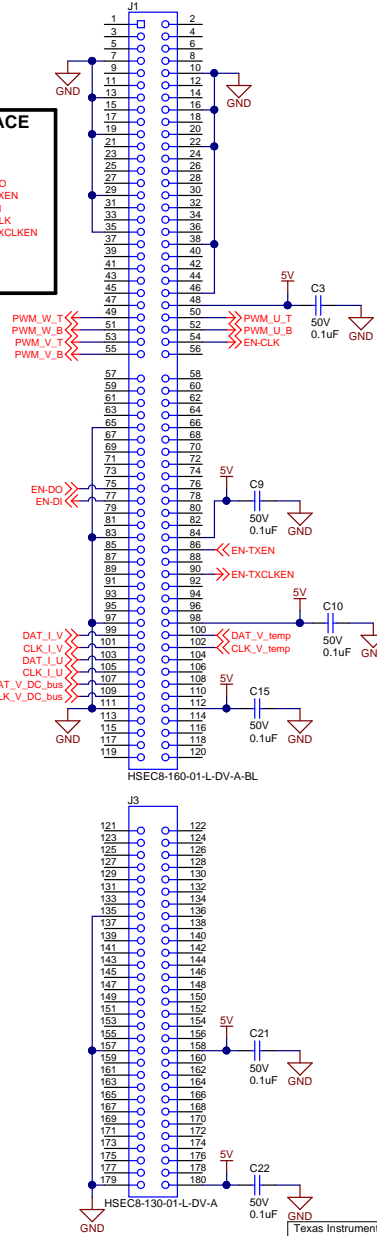
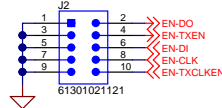




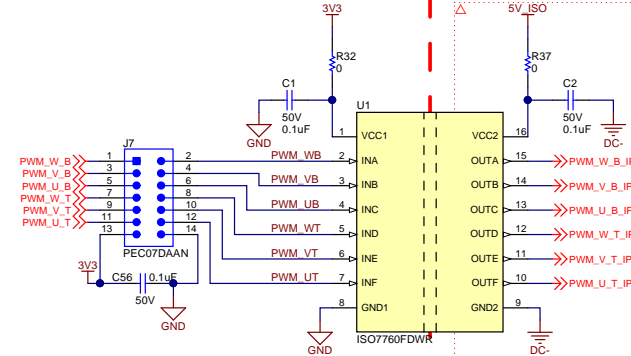
## C2000 CONTROL CARD INTERFACE

### ENCODER INTERFACE

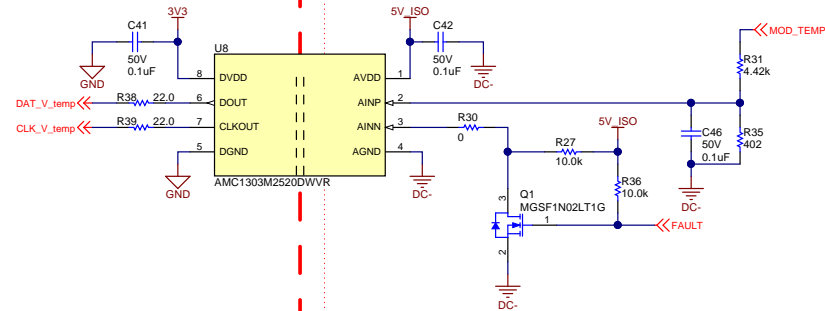


## PWM ISOLATION

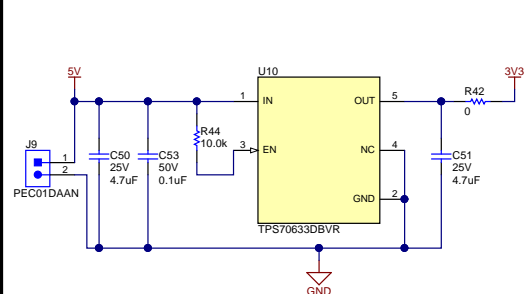
### REINFORCED ISOLATION



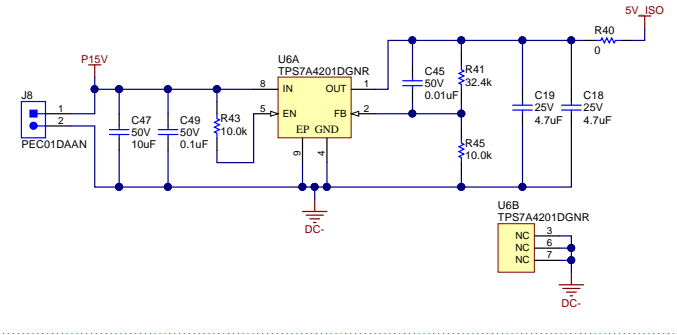
## FAULT ISOLATION



## PRIMARY SIDE 5V to 3.3V



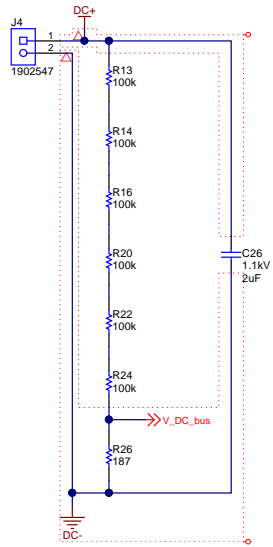
## SECONDARY SIDE 15V to 5V



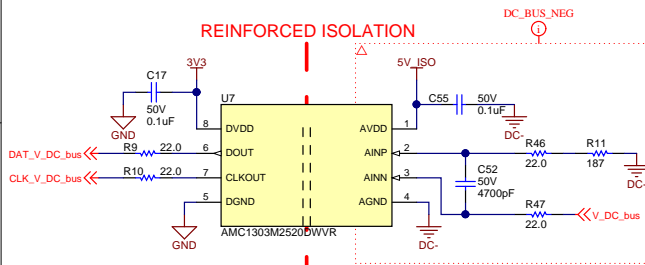
Texas Instruments and/or its licensors do not warrant the accuracy or completeness of this specification or any information contained therein. Texas Instruments and/or its licensors do not warrant that this design will meet the specifications, will be suitable for your application or fit for any particular purpose, or will operate in an implementation. Texas Instruments and/or its licensors do not warrant that the design is production worthy. You should completely validate and test your design implementation to confirm the system functionality for your application.

Orderable: NA	Designed for: Public Release	Mod. Date: 11/30/2017
TID #: 01349	Project Title: IPM Inverter with 6 Channel PWM Isolator	
Number: TIDA-01349   Rev: E1	Sheet Title: MCUInterface PowerSupply_PWM Temperature	
SVN Rev: Version control disabled	Assembly Variant: [No Variations]	Sheet: 2 of 4
Drawn By:	File: TIDA-01349_MCU_Supply_PWM_Temp_SchD4Size: B	
Engineer: PN	Contact: <a href="http://www.ti.com/support">http://www.ti.com/support</a>	

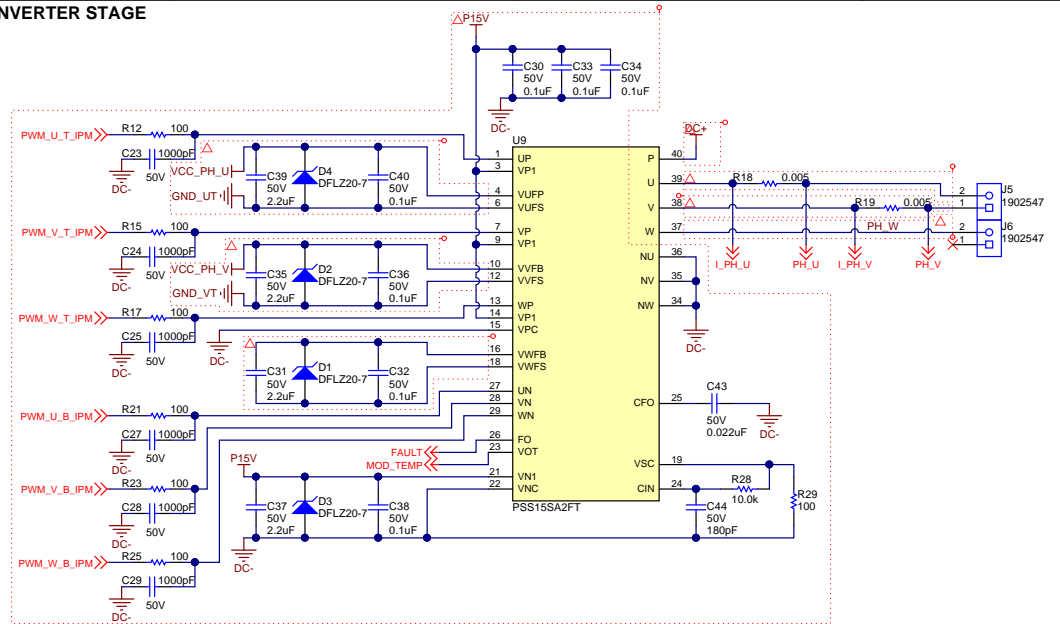
# DC BUS VOLTAGE INPUT



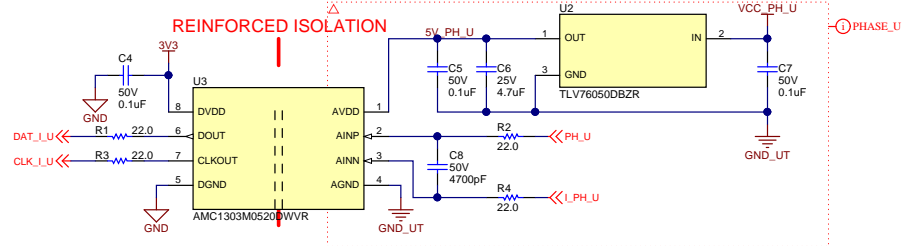
# VOLTAGE SENSE - DC BUS



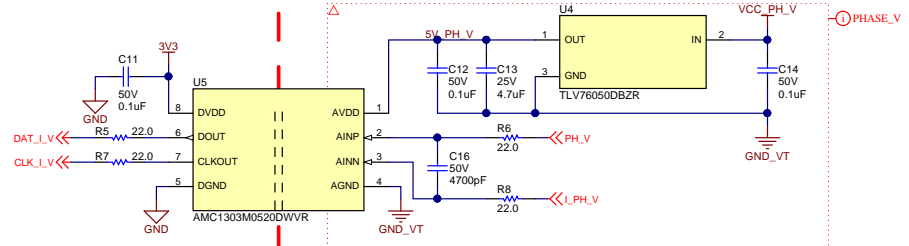
# DC/AC IPM BASED INVERTER STAGE



# CURRENT SENSE - MOTOR PHASE U



# CURRENT SENSE - MOTOR PHASE V



Texas Instruments and/or its licensors do not warrant the accuracy or completeness of this specification or any information contained therein. Texas Instruments and/or its licensors do not warrant that this design will meet the specifications, will be suitable for your application or fit for any particular purpose, or will operate in an implementation. Texas Instruments and/or its licensors do not warrant that the design is production worthy. You should completely validate and test your design implementation to confirm the system functionality for your application.

Orderable: NA	Designed for: Public Release	Mod. Date: 11/23/2017
TID #: 01349	Project Title: IPM Inverter with 6 Channel PWM Isolator	
Number: TIDA-01349 [Rev: E1]	Sheet Title: InverterPowerStage_DCVoltagePhaseCurrentSense	Sheet: 3 of 4
SVN Rev: Version control disabled	Assembly Variant: [No Variations]	
Drawn By:	File: TIDA-01349_Inverter_VISense_SchDoc	Size: B
Engineer: PN	Contact: <a href="http://www.ti.com/support">http://www.ti.com/support</a>	

FID1

FID2

FID3

FID4

FID5

FID6

PCB LOGO  
Pb-Free Symbol

PCB LOGO  
FCC disclaimer

LOGO4  
  
CAUTION HOT SURFACE

LOGO5  
  
DANGER HIGH VOLTAGE

ZZ1  
Label Assembly Note  
This Assembly Note is for PCB labels only

ZZ2  
Assembly Note  
These assemblies are ESD sensitive, ESD precautions shall be observed.

ZZ3  
Assembly Note  
These assemblies must be clean and free from flux and all contaminants. Use of no clean flux is not acceptable.

ZZ4  
Assembly Note  
These assemblies must comply with workmanship standards IPC-A-610 Class 2, unless otherwise specified.

Orderable: NA

Designed for: Public Release

Mod. Date: 11/23/2017

TID #: 01349

Project Title: IPM Inverter with 6 Channel PWM Isolator

Number: TIDA-01349

Rev: E1

Sheet Title: EVM Hardware

SVN Rev. Version control disabled

Assembly Variant: [No Variations]

Sheet: 4 of 4

Drawn By:


File: TIDA-01349\_EVM\_Hardware.SchDoc

Size: B

Engineer: PN

Contact: <http://www.ti.com/support>

Texas Instruments and/or its licensors do not warrant the accuracy or completeness of this specification or any information contained therein. Texas Instruments and/or its licensors do not warrant that this design will meet the specifications, will be suitable for your application or fit for any particular purpose, or will operate in an implementation. Texas Instruments and/or its licensors do not warrant that the design is production worthy. You should completely validate and test your design implementation to confirm the system functionality for your application.

 TEXAS  
INSTRUMENTS

<http://www.ti.com>

©Texas Instruments 2017