

Revision History				
Rev	ECN #	Approved Date	Approved by	Notes
N/A	N/A	N/A	N/A	N/A

A

B

C

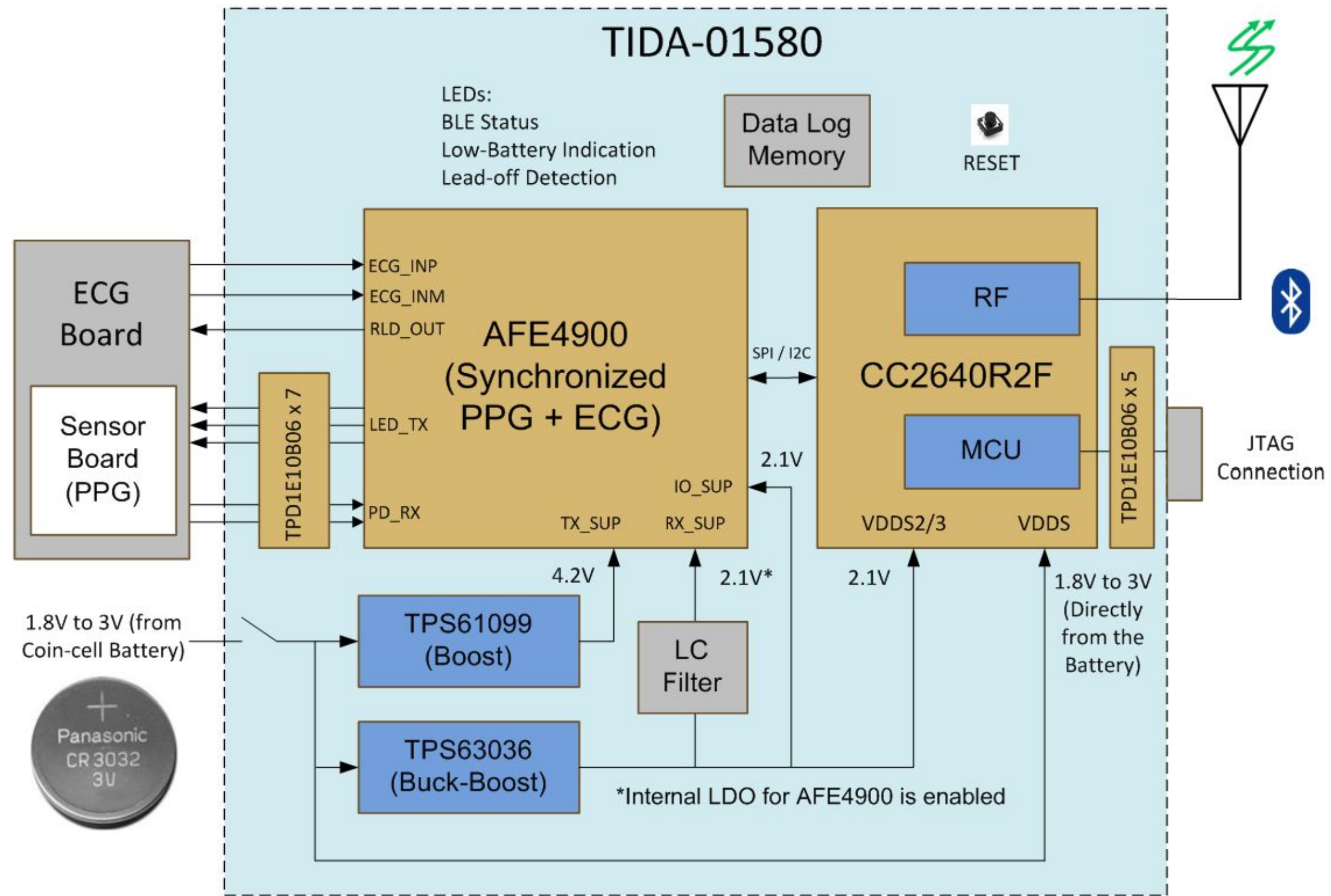
D

A

B

C

D

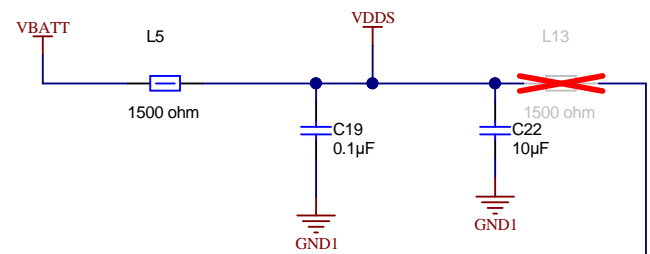


Copyright © 2018, Texas Instruments Incorporated

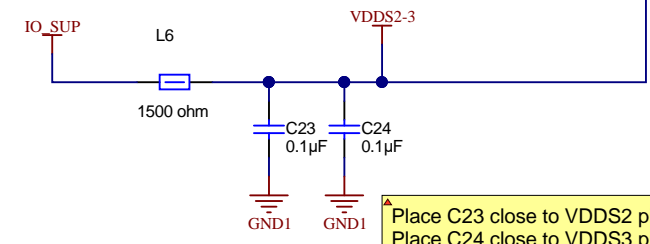
Texas Instruments and/or its licensors do not warrant the accuracy or completeness of this specification or any information contained therein. Texas Instruments and/or its licensors do not warrant that this design will meet the specifications, will be suitable for your application or fit for any particular purpose, or will operate in an implementation. Texas Instruments and/or its licensors do not warrant that the design is production worthy. You should completely validate and test your design implementation to confirm the system functionality for your application.

Orderable: N/A	Designed for: Public Release	Mod. Date: 4/9/2018	TEXAS INSTRUMENTS http://www.ti.com © Texas Instruments 2019
TID #: TIDA-01580	Project Title: Wireless Patient Monitor		
Number: TIDA-01580	Rev: E2	Sheet Title: Block Diagram	
SVN Rev: Not in version control	Assembly Variant: 001	Sheet: 1 of 5	
Drawn By: Sanjay Pithadia	File: TIDA-01580-E2-Main-BD.SchDoc	Size: B	
Engineer: Sanjay Pithadia	Contact: http://www.ti.com/support		

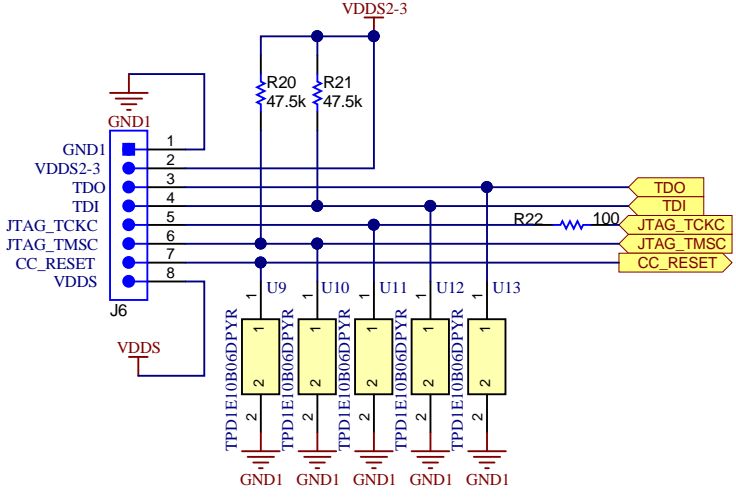
VDDS Decoupling Capacitors



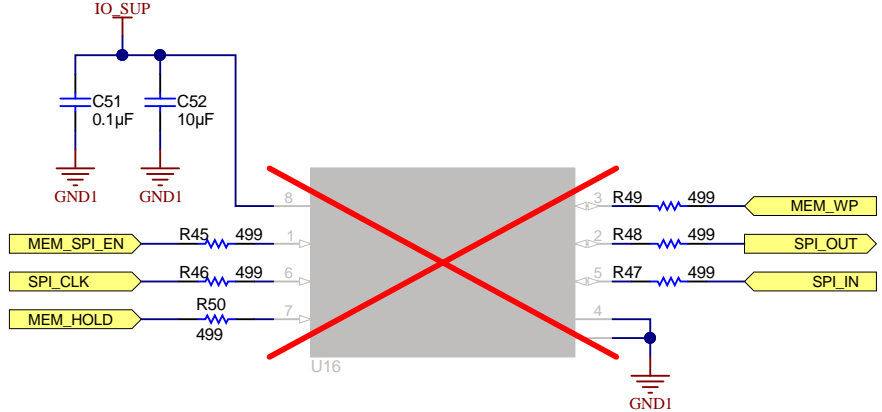
VDDS2-3 Decoupling Capacitors



MCU Programming Connector

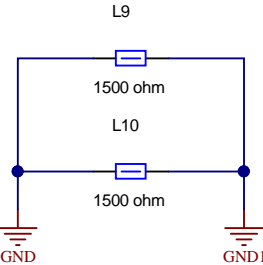
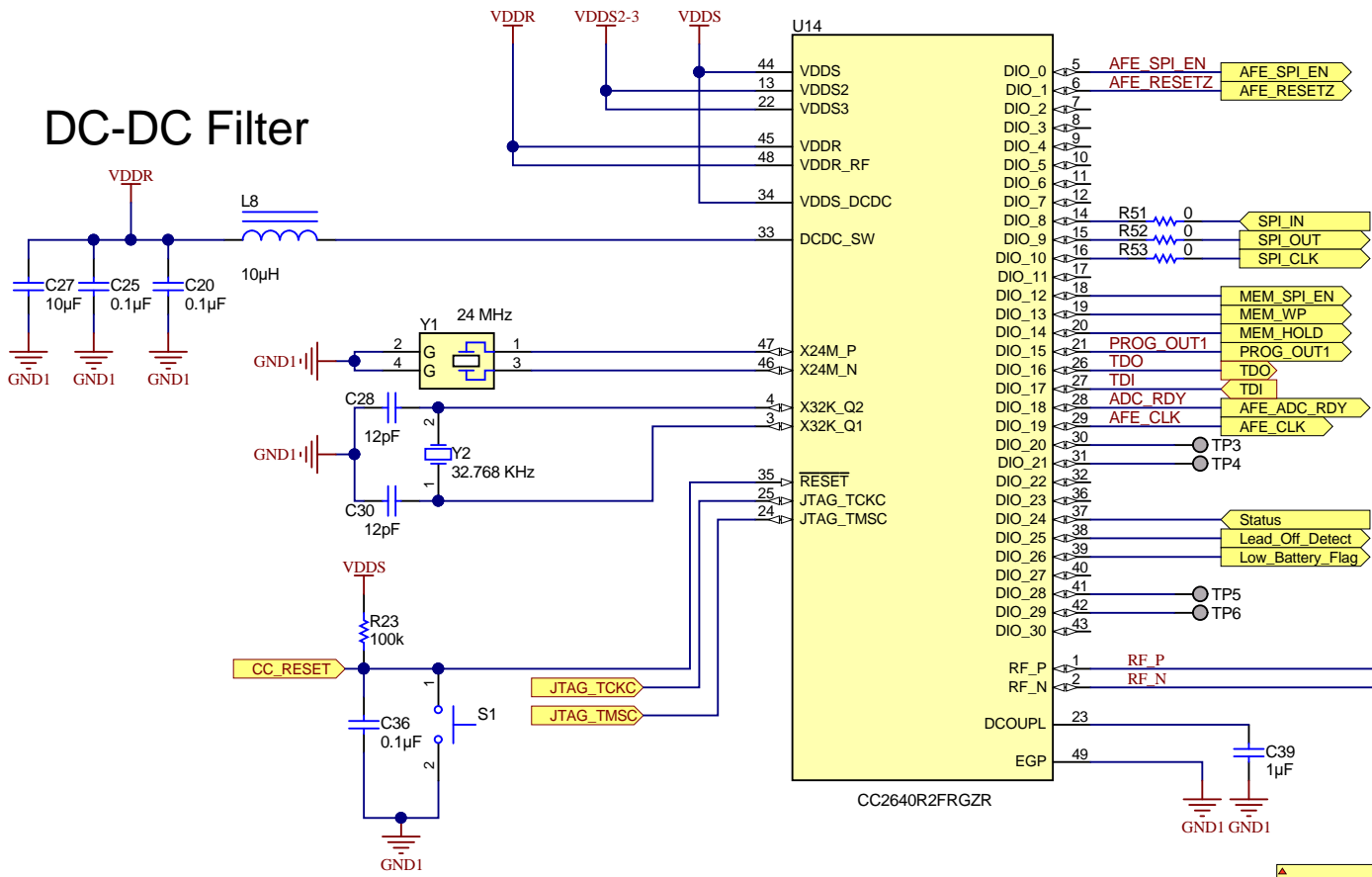


External Memory

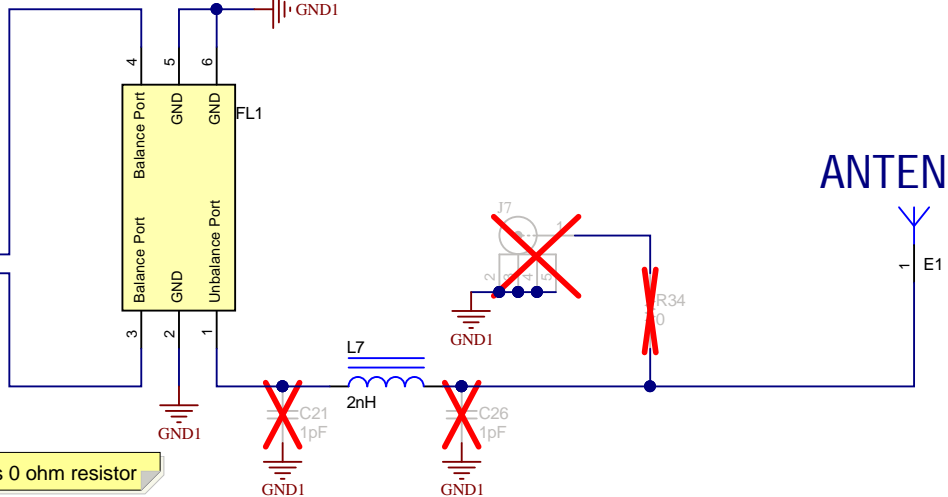


BLE-CC2640R2F

DC-DC Filter



ANTENNA



Texas Instruments and/or its licensors do not warrant the accuracy or completeness of this specification or any information contained therein. Texas Instruments and/or its licensors do not warrant that this design will meet the specifications, will be suitable for your application or fit for any particular purpose, or will operate in an implementation. Texas Instruments and/or its licensors do not warrant that the design is production worthy. You should completely validate and test your design implementation to confirm the system functionality for your application.

Orderable: N/A	Designed for: Public Release	Mod. Date: 4/9/2018
TID #: TIDA-01580	Project Title: Wireless Patient Monitor	
Number: TIDA-01580	Rev: E2	Sheet Title: CC2640R2F (MCU + RF)
SVN Rev: Not in version control	Assembly Variant: 001	Sheet: 3 of 5
Drawn By: Sanjay Pithadia	File: TIDA-01580-E2-Main-MCU.SchDoc	Size: B
Engineer: Sanjay Pithadia	Contact: http://www.ti.com/support	http://www.ti.com
		© Texas Instruments 2019



PCB Number: TIDA-01580
PCB Rev: E2

PCB
LOGO
Pb-Free Symbol

PCB
LOGO
FCC disclaimer

PCB
LOGO
Logo4

Logo1
PCB
LOGO
WEEE logo

LBL1
PCB Label
Size: 0.65" x 0.20 "

ZZ1
Label Assembly Note
This Assembly Note is for PCB labels only

Variant/Label Table	
Variant	Label Text
001	ChangeMe!
002	ChangeMe!

ZZ2
Assembly Note
These assemblies are ESD sensitive, ESD precautions shall be observed.

ZZ3
Assembly Note
These assemblies must be clean and free from flux and all contaminants. Use of no clean flux is not acceptable.

ZZ4
Assembly Note
These assemblies must comply with workmanship standards IPC-A-610 Class 2, unless otherwise specified.

Texas Instruments and/or its licensors do not warrant the accuracy or completeness of this specification or any information contained therein. Texas Instruments and/or its licensors do not warrant that this design will meet the specifications, will be suitable for your application or fit for any particular purpose, or will operate in an implementation. Texas Instruments and/or its licensors do not warrant that the design is production worthy. You should completely validate and test your design implementation to confirm the system functionality for your application.

Orderable: N/A	Designed for: Public Release	Mod. Date: 5/16/2019
TID #: TIDA-01580	Project Title: Wireless Patient Monitor	
Number: TIDA-01580	Rev: E2	Sheet Title: Hardware
SVN Rev: Not in version control	Assembly Variant: 001	Sheet: 5 of 5
Drawn By: Sanjay Pithadia	File: TIDA-01580-E2-Main-Hardware.SchDoc	Size: B
Engineer: Sanjay Pithadia	Contact: http://www.ti.com/support	