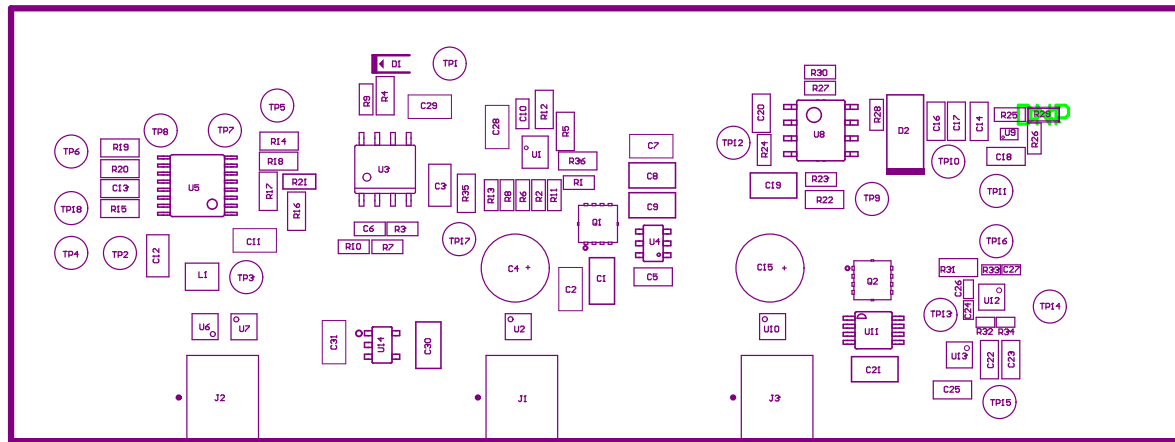


ZZ1 Install label in silkscreened box after final wash. Text shall be 8 pt font. Text shall be per the Label Table in the PDF schematic.

Z22 These assemblies are ESD sensitive, ESD precautions shall be observed.

223 ■ These assemblies must be clean and free from flux and all contaminants. Use of no clean flux is not acceptable.

Z24 ■ These assemblies must comply with workmanship standards IPC-A-610 Class 2, unless otherwise specified.

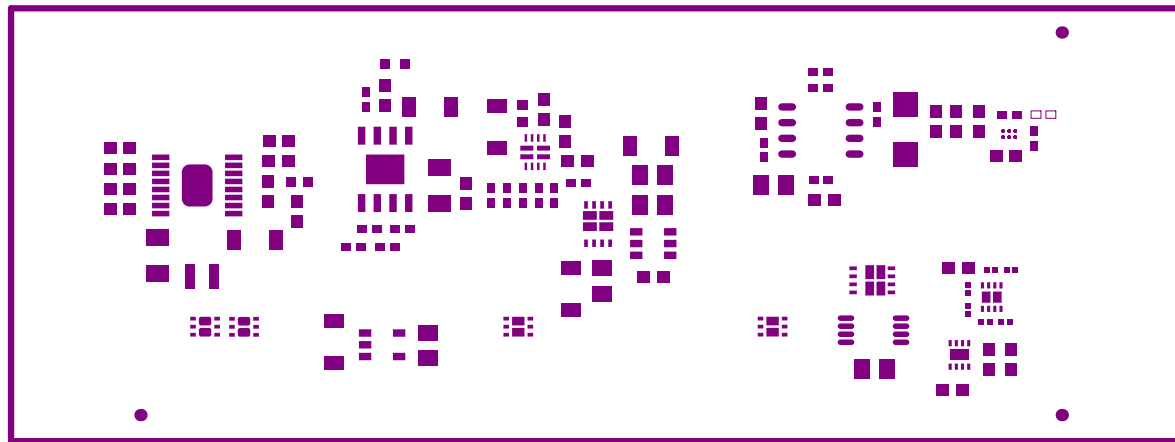


COMPONENTS MARKED 'DNP' SHOULD NOT BE POPULATED.

ASSEMBLY VARIANT:

001

PCB VIEWED FROM TOP SIDE	BOARD #:	TIDA-010008_DCInput_Protection	REV:	E1	SUN REV:	Not In VersionControl
LAYER NAME =	MS Assembly Top					
	TID #:	010008				
PLOT NAME =	Top LayerAssembly Drawing					GENERATED : 5/24/2019 11:09:43 AM TEXAS INSTRUMENTS



Top Paste



COMPONENTS MARKED 'DNP' SHOULD NOT BE POPULATED.

ASSEMBLY VARIANT: 001

PCB VIEWED FROM BOTTOM SIDE	BOARD #: TIDA-010008_DCinput_Protection	REV: E1	SUN REV: Not In VersionControl
LAYER NAME = M6 Assembly Bottom	TID #: 010008		
PLOT NAME = Bottom LayerAssembly Drawing	GENERATED : 5/24/2019 11:09:49 AM		TEXAS INSTRUMENTS

Bottom Paste

