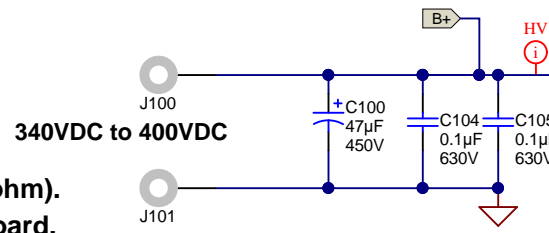
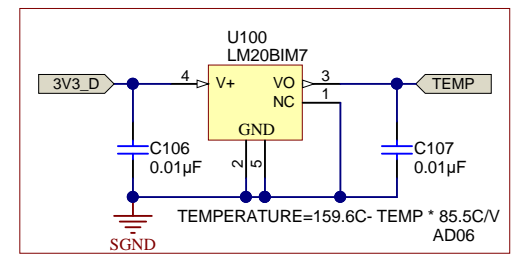
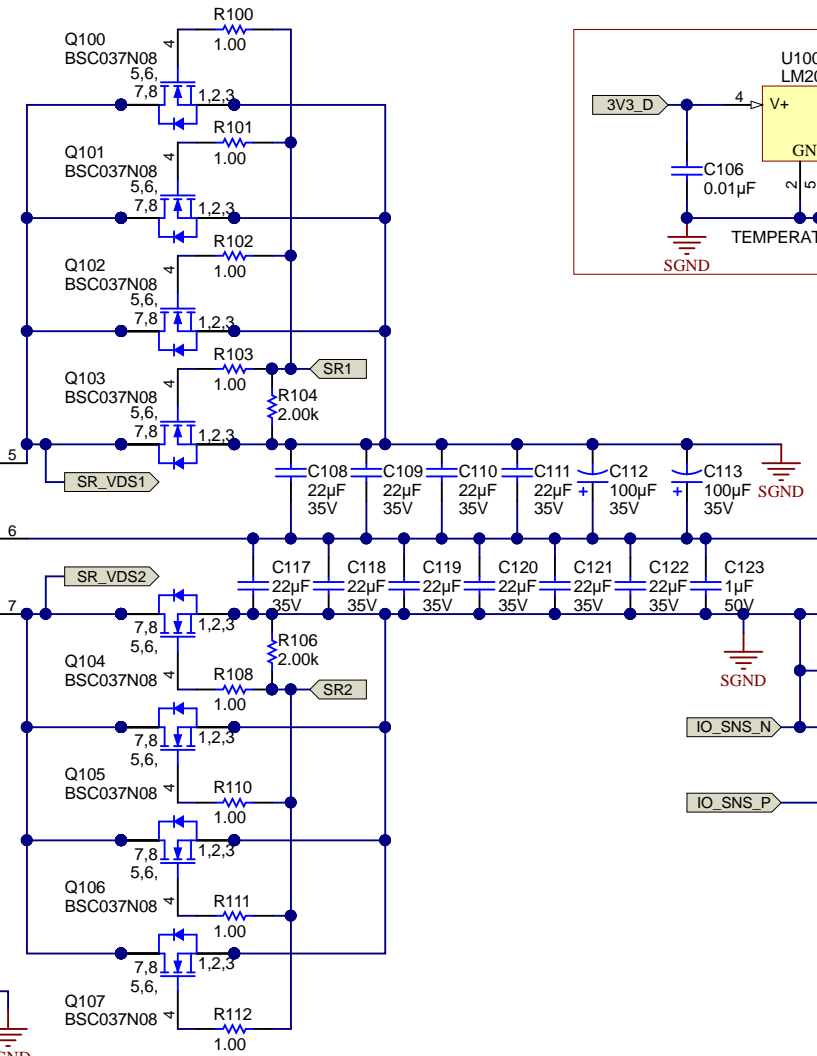
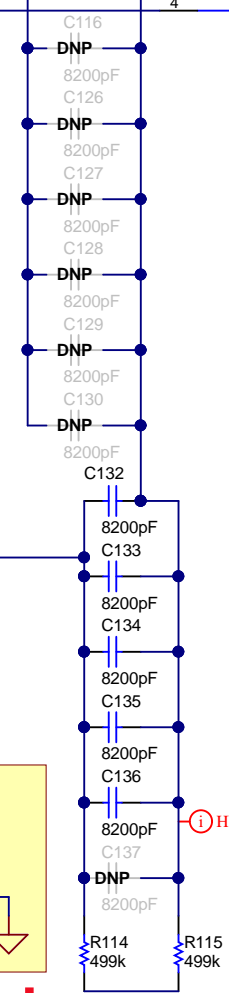
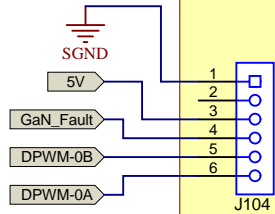


Notes:

1. Minimum switching frequency: 250kHz
2. Maximum switching frequency: 850kHz
3. Change R100 on PMP20285_UCD3138A_DC RevA to 21.5kohm).
4. Add C901, C902, D901, R901, R902, R903 circuit on main board.

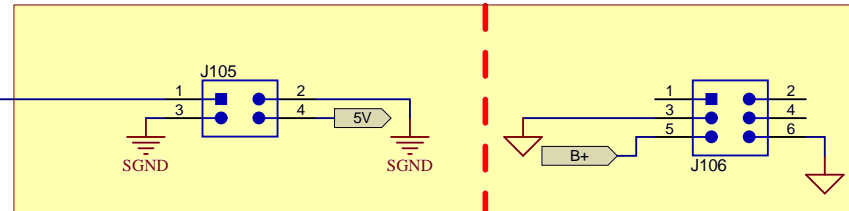
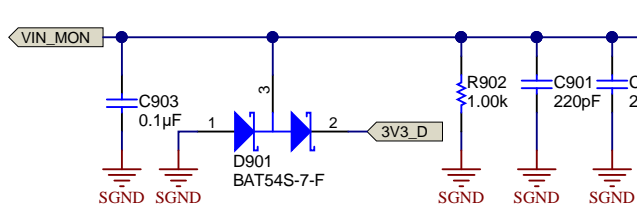


To LMG3410-HB-EVM (SV601254-E)



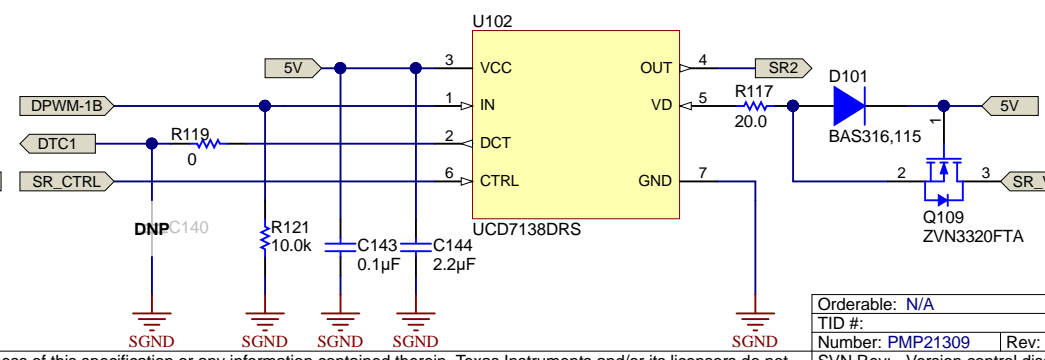
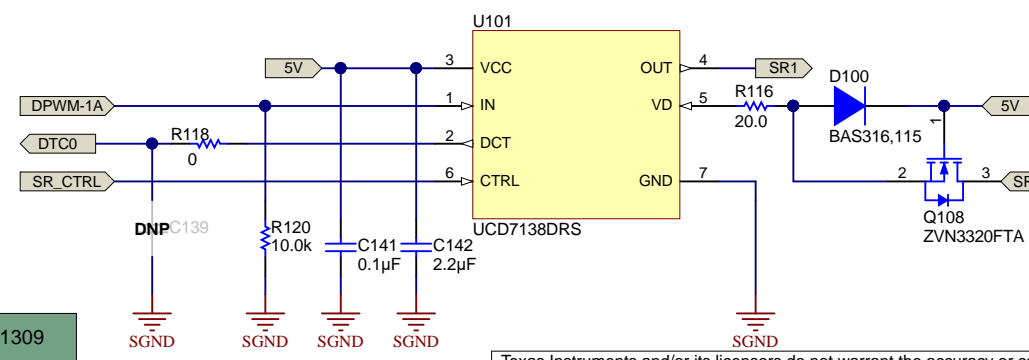
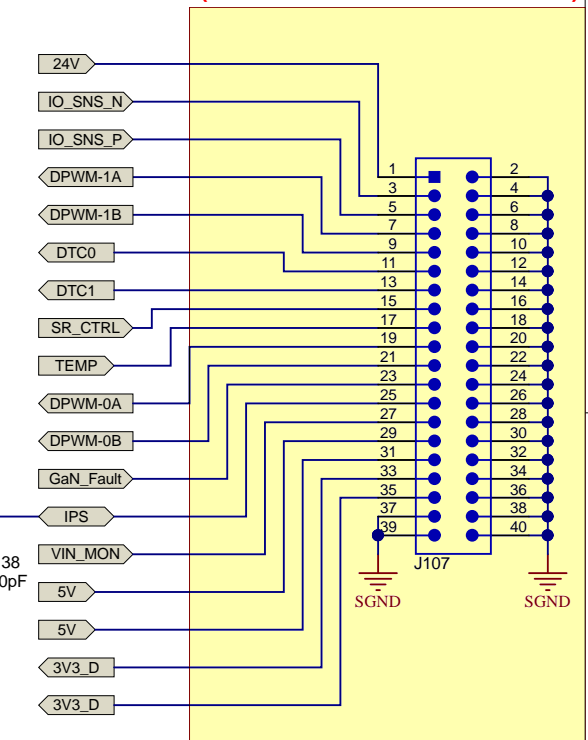
24V/500W

Link to bias supply daughter card (PMP20306RevA)



Secondary side | Primary side

Link to controller card (PMP20285_UCD3138A_DC RevA)



PCB Number: PMP21309
PCB Rev: A

Texas Instruments and/or its licensors do not warrant the accuracy or completeness of this specification or any information contained therein. Texas Instruments and/or its licensors do not warrant that this design will meet the specifications, will be suitable for your application or fit for any particular purpose, or will operate in an implementation. Texas Instruments and/or its licensors do not warrant that the design is production worthy. You should completely validate and test your design implementation to confirm the system functionality for your application.

| | | |
|-----------------------------------|--|----------------------|
| Orderable: N/A | Designed for: Public Release | Mod. Date: 3/15/2018 |
| TID #: | Project Title: 390V to 24V/500W LLC | |
| Number: PMP21309 | Rev: A | Sheet Title: |
| SVN Rev: Version control disabled | Assembly Variant: 001 | Sheet: 1 of 1 |
| Drawn By: | File: PMP11432_BlankSheet.SchDoc | Size: B |
| Engineer: Sheng-Yang Yu | Contact: http://www.ti.com/support | |

